

**WASHINGTON COUNTY
BOARD OF EDUCATION**

November 26, 2024

5:00 PM

Central Office

- I. Call to Order**
- II. Announcements**
 - A. TSBA Board Self Evaluation will be emailed to Board members on December 2, 2024. The deadline to complete is December 13, 2024. Results will be available on December 20, 2024.**

December 5, 2024: Prior to the Regular Board Meeting. Photo Genius will be here at 4:15 pm to take Board Members professional pictures.

December 5, 2024: Board of Distinction peer evaluation scheduled to occur. Melissa Woods from Kingsport City Schools Board of Education and Tom Hager from Johnson City Schools Board of Education will be here to evaluate our board meeting.
- III. Superintendent**
 - A. Discuss request from Washington County EMS for donation of a portion of Lamar Elementary School property to construct a fire station facility next to the existing EMS station.**
 - B. Discuss request by Representative Tim Hicks to utilize space at the Old Jonesborough Middle School building for the on-going Hurricane Helene Disaster Relief Efforts.**
 - C. Request March 2025 WCBOE Regular meeting date change**
- IV. Academics**
 - A. Overnight/Out-of-State Field Trip Requests**
 - 1. Gray Elementary School**
 - Overnight and Out-of-State**
 - 8th Grade Class**
 - Charleston, SC**
 - Departure Date: May 14th, 2025**
 - Return Date: May 16th, 2025**
 - Duration: 3 Days**

2. **Ridgeview Elementary
Overnight and Out-of-State
8th Grade Trip
Washington, DC
Departure Date: May 14th, 2025
Return Date: May 16th, 2025
Duration: 3 Days**
3. **DBHS Overnight
Overnight and Out-of-State
Civil War/AP History Class
Charleston, SC
Departure Date: April 2nd, 2025
Return Date: April 4th, 2025
Duration: 3 Days**
4. **DCHS Overnight
Overnight and Out-of-State
NJROTC 9-12th Grade
Patriots Point, Citadel
Mt. Pleasant, SC
Departure Date: March 3rd, 2025
Return Date: March 22nd, 2025
Duration: 2.5 Days**

B. High School Improvement Supports

V. Business/Finance

A. Monthly Financials

B. WCDE Budgets and Fund Balance Tracking

C. Purchase Orders

1. **Purchase Order 3737; Smith Garage Equipment; Lexington, Kentucky, Automotive Alignment System (DCHS); CTE-ISM Grant; \$32,020.78; Line Item 141E 71300-730-002**
2. **Purchase Order 4087; Scholarus-Education Elements; Livonia, Michigan; Professional Services -- District-Wide; \$142,907.00; Line Item 141E 72210-524**
3. **Purchase Order 4266; Inspire Business Interiors; Johnson City, Tennessee; DCHS Bookstore Renovations Furniture; DCHS; CTE-ISM; \$18,030.42; Line Item 141E 71100-722-002**
4. **Purchase Order 4268; Smith Garage Equipment; Lexington, Kentucky; Automotive Alignment Scissor Lift; DCHS; CTE-ISM Grant; \$35,926.05; Line Item 141E 71300-730-002**
5. **Purchase Order 4283; Valley Trailer; Jonesborough, Tennessee; Lift Gate for Van, Including Intallation (WCS School Nutrition Department); \$10,251.00; Line Item 141E 72710-729**
6. **Purchase Order 28069 (DBHS School Fund); Bass Pro Shop; Bristol, Tennessee; All Terrain Vehicle -- Campus Management; DBHS; Not to**

exceed \$19,500.00; Line Item 145 E 00000-003-000-15000-010 (DBHS School Funds)

VI. Operations

A. Project Updates

- 1. High School Stadium Upgrades Project; Application and Certification of Payment No. 10; Payment to Burwil Construction Co.; \$503,511.68; Purchase Order 2499 (Board approved 08/08/2024) not to exceed \$4,888,000.00; Line Item 141E 76100-799**
- 2. Change Order #004: WCS Stadium Upgrades DBHS/DCHS; \$7225.18**

B. Request to donate scoreboards at Old JMS to Carver Rec

C. Fencing quotes for South Central Elementary, Gray Elementary and Fall Branch Elementary-Camous Security

D. Crossroads Church Parking Lot

E. Old Jonesborough ES/MS Property

- 1. Sale of Jonesborough MS Building/ Old JES/JMS Property**

VII. Student Supports

A. Contracted Services

VIII. Adjournment

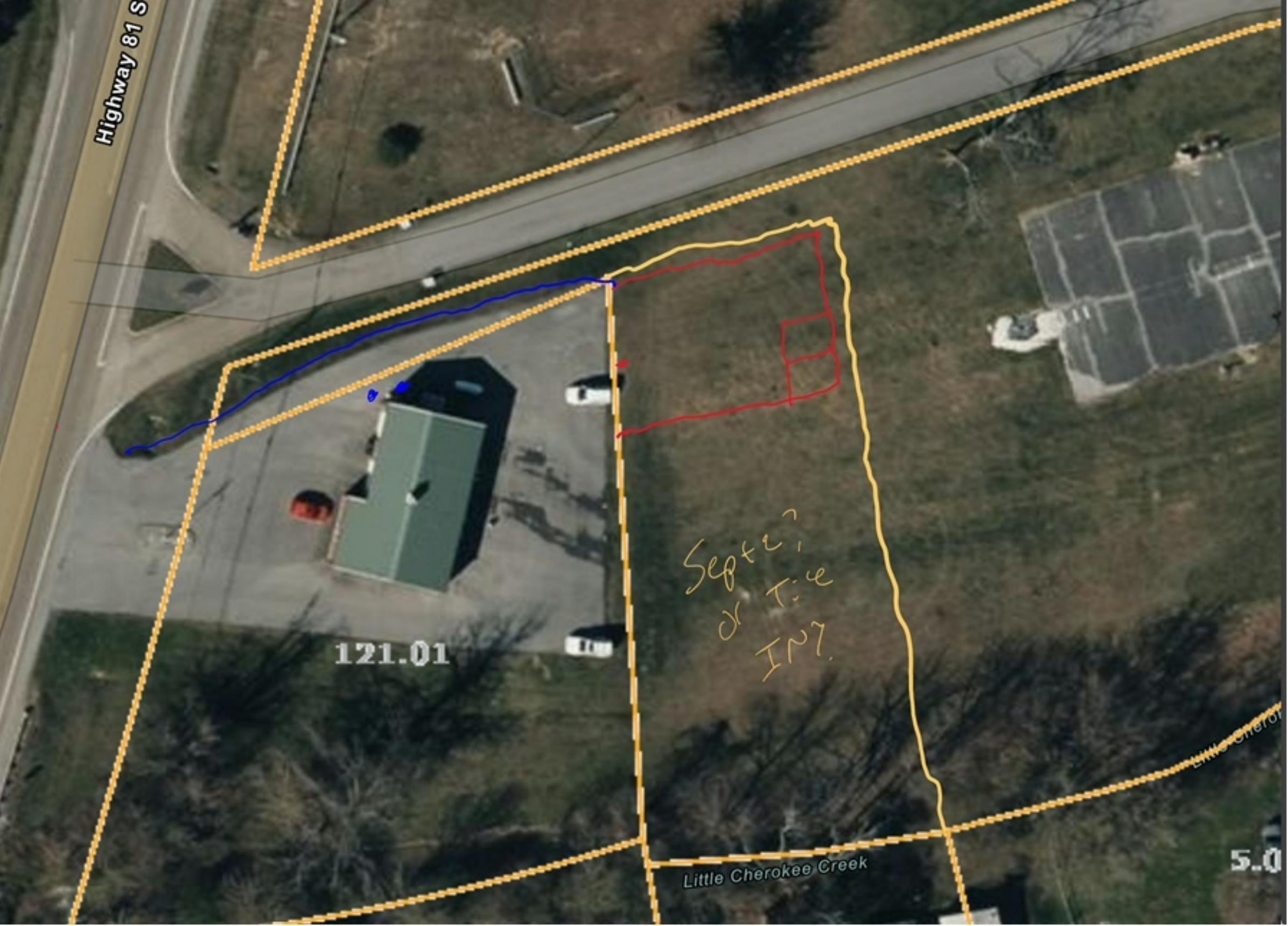
Highway 81 S

121.01

Septic
dr T:4
IN7.

Little Cherokee Creek

5.0



Washington County Department of Education
School Educational **OVERNIGHT** Trip Authorization*

OCT 30 2024

BY: KR

Date of Request 10/29/24 School Gray School Trip Date May 14-16, 2025

Estimated time of departure ~6:00 am and return ~7:00 pm total time away 3 days

Destination (include location) Charleston, SC

Teacher Karen Matherly Class 8A Grade 8th
Mr. Sanders 8B 8th

Chaperones Karen Matherly Number of Students Involved ~56
Administrator

Estimated Total Miles (both ways) of Trip ~670 mi

Bus Driver/Number Young Transportation Bus Driver/ Number Rodney Grindstaff

Will Chaperones have a list (roll) that they are responsible for? yes

As you plan the trip, will all children be given instructions as to what they should do if they become separated (lost) from the group? yes

Will you have on file parental release forms signed by parents or legal guardians? yes

Explain the educational value of the trip: Charleston, SC is known for its rich history. Students will have the opportunity to visit multiple sites where they will get to hear the history of the Revolutionary & Civil wars, slavery, the declaration of ind, and much more!

Total Cost Estimate ~6061

Plans for meeting the costs We will do fundraisers throughout the year to help offset the cost of the trip.

Transportation cost for educational trips shall be calculated in the following manner:
\$16.00 per hour for driver (2 hour minimum)
\$ 3.15 per hour to cover fixed charges (SS, retirement. etc.)
\$19.15 total to be remitted to the central office per hour

Reimbursement for the bus and fuel shall be made at the rate of \$0.75 per mile.
*Refer to Board Policy 4.302

[Signature]
Principal's Signature
APPROVED
BY WC SUPERINTENDENT [Signature]
Superintendent's Signature

10-29-24
Date
10-30-24
Date

Date Approved by the Board of Education _____

RECEIVED

Washington County Department of Education
School Educational **OVERNIGHT** Trip Authorization*

NOV 05 2024

BY: KP

Date of Request 11/1/24 School Ridgeview Trip Date May 14-16, '25

Estimated time of departure 6:30am ^{5/14} and return 10:30pm ^{5/16} total time away 3 days

Destination (include location) Washington D.C.

Teacher K. Sanders D. Arwood Class 8th grade Grade 8th grade

Chaperones M. Haren
L. Adams
J. Simpson

Number of Students Involved appx 70

Estimated Total Miles (both ways) of Trip appx 412m
ea. way

Bus Driver/Number n/a Bus Driver/ Number n/a

Will Chaperones have a list (roll) that they are responsible for? yes

As you plan the trip, will all children be given instructions as to what they should do if they become separated (lost) from the group? yes

Will you have on file parental release forms signed by parents or legal guardians? yes

Explain the educational value of the trip: Students will have the opportunity to tour our nation's capital. They will visit historical monuments, Smithsonian museums, & Arlington Nat'l Cemetery.

Total Cost Estimate \$630 per person

Plans for meeting the costs Students & families will be able to make monthly payments. 8th grade teachers will also provide fundraising opportunities (Homecoming, dance, a drama presentation).

Transportation cost for educational trips shall be calculated in the following manner:

- \$16.00 per hour for driver (2 hour minimum)
- \$ 3.15 per hour to cover fixed charges (SS, retirement, etc.)
- \$19.15 total to be remitted to the central office per hour

Will use Charter bus transportation

Reimbursement for the bus and fuel shall be made at the rate of \$.75 per mile.

*Refer to Board Policy 4.302

[Signature]
Principal's Signature

APPROVED

11/4/2024
Date

BY WC SUPERINTENDENT [Signature]
Superintendent's Signature

11-05-24
Date

Date Approved by the Board of Education _____

Washington County Department of Education
School Educational **OVERNIGHT** Trip Authorization*

RECEIVED

NOV 19 2024

KP

Date of Request 11-13-24 School DBHS Trip Date APRIL 2, 3, & 4 BY: KP

Estimated time of departure 7 AM and return 7 PM total time away 60 hrs

Destination (include location) CHARLESTON, SC - SEE ATTACHED LIST OF SITES

Teacher TERRY KING Class CIVIL WAR HIST. Grade 11-12

NATHAN GOUGE A.P. U.S. HIST 11

Chaperones SARA CHAPMAN Number of Students Involved 45

BRANDON FENWICK Estimated Total Miles (both ways) of Trip 680

Bus Driver/Number CHARTER BUS Bus Driver/ Number TODLOWE COACH / JACKIE DENNY

Will Chaperones have a list (roll) that they are responsible for? YES

As you plan the trip, will all children be given instructions as to what they should do if they become separated (lost) from the group? YES

Will you have on file parental release forms signed by parents or legal guardians? YES

Explain the educational value of the trip: SEE ATTACHED PAGE ->

Total Cost Estimate \$360 PER STUDENT

Plans for meeting the costs STUDENTS PAY INDIVIDUALLY FOR ALL TRIP EXPENCES

Transportation cost for educational trips shall be calculated in the following manner:
\$16.00 per hour for driver (2 hour minimum)
\$ 3.15 per hour to cover fixed charges (SS, retirement, etc.)
\$19.15 total to be remitted to the central office per hour

Reimbursement for the bus and fuel shall be made at the rate of \$.75 per mile.
*Refer to Board Policy 4.302

Principal's Signature Stephanie Gray
APPROVED
BY WC SUPERINTENDENT [Signature]
Superintendent's Signature

Date 11/15/24
Date 11-19-24

Date Approved by the Board of Education _____

We will be taking students from the advanced history classes to several historically significant places in and around Charleston, SC. By visiting the location of events that played important roles in U.S. history the students will gain a much deeper understanding and appreciation of these event and their impact on the development of the United States.

The following is a list of the sites and activities that students will be visiting and participating in on this trip:

McLeod Plantation

Patriots Point: USS Yorktown aircraft carrier and a destroyer from WWII

Walking tour of Charleston's historic district with an emphasis on the history of pirates in Charleston

Carriage tour of Charleston's historic district

Fort Sumter National Monument

CSS H.L. Hunley (Civil War submarine).

The Black Fedora dinner theater: an audience interactive play

RECEIVED

NOV 9 0 2024

BY: KR

Washington County Department of Education
School Educational **OVERNIGHT** Trip Authorization*

Date of Request 11/13/2024 School DCHS Trip Date 20-22 March 2025

Estimated time of departure 1200pm and return 10:00pm total time away 2.5 days

Destination (include location) Patriots Point, Citadel, Mt Pleasant S

Teacher Warrant Selhorst Class NJROTC Grade 9-12

CHIEF FRANK NJROTC 9-12

Chaperones Michelle Selhorst Number of Students Involved 40

Alyssa Selhorst Estimated Total Miles (both ways) of Trip 870

Bus Driver/Number COACH BUSES Bus Driver/ Number _____

Will Chaperones have a list (roll) that they are responsible for? YES

As you plan the trip, will all children be given instructions as to what they should do if they become separated (lost) from the group? YES

Will you have on file parental release forms signed by parents or legal guardians? YES

Explain the educational value of the trip: The Cadets will live aboard the USS Yorktown, they

be engaged in shipboard functions, we will travel to the CSS Huntley a ship that was taught on this year

We will visit the Citadel and be able to view the Brigade of Cadets Parade

Total Cost Estimate 7500.00

Plans for meeting the costs We will utilize Navy JROTC Funding that is already available

Transportation cost for educational trips shall be calculated in the following manner:

- \$16.00 per hour for driver (2 hour minimum)
- \$ 3.15 per hour to cover fixed charges (SS, retirement. etc.)
- \$19.15 total to be remitted to the central office per hour

Reimbursement for the bus and fuel shall be made at the rate of **\$.75** per mile.
*Refer to Board Policy 4.302

Abigail Davis
Principal's Signature
APPROVED
BY WC SUPERINTENDENT
Superintendent's Signature [Signature]

11.15.24
Date
11-20-24
Date

Date Approved by the Board of Education _____

Educentric's School Breakthrough Performance Model (SBPM)

Overview

Educentric's School Breakthrough Performance Model (SBPM) is designed to revolutionize school performance by utilizing the North Star Metric Framework. This innovative approach, customized for K-12 education, integrates all aspects of school performance—including curriculum, instruction, assessment, culture, climate, leadership, and stakeholder engagement. Our model draws inspiration from successful companies like Airbnb, Facebook, and Toyota, as well as from school districts such as Palm Beach County, FL, San Diego Unified, CA, and Denver Public Schools, which have achieved remarkable outcomes using similar breakthrough processes.

Why Choose Educentric?

Unlike conventional school improvement plans that target incremental changes, Educentric offers a Breakthrough Performance Model aimed at strategic, significant, and lasting improvements. Our approach encourages schools to focus on a single, crucial objective—the North Star Metric—that defines their path to success. This targeted focus allows schools to allocate time and resources effectively to achieve transformative results. Our Flight Plan (school improvement plan) is only two-pages long.

Educentric Offerings to Schools

Initial Assessment and Analysis

1. **Surveys:** Educentric will survey parents and staff at the beginning and end of the partnership.
2. **Lagging Indicators Review:** Analyze past performance indicators such as literacy and math scores, student attendance, suspension rates, graduation rates, and college readiness metrics.
3. **Current State Analysis:** Prepare a comprehensive analysis based on survey results and performance data.
4. **Collaborative Review:** Share findings with the superintendent and school principal, followed by discussions during a two-day training session with staff representatives.

Training and Strategic Planning

5. **Two-Day Training:** Conduct intensive training for a school breakthrough performance team, which includes:
 - Principal.
 - Four teachers.

- Two parents (optional).
 - Inclusion of ‘influencers’ is encouraged.
 - Maximum of five teams per training group.
6. **Focus Areas During Training:**
- **Core Purpose:** Establish a unified mission for the school.
 - **Value Proposition:** Define what the school wants to be known for (e.g., “Anywhere High School offers the premier College and Career Readiness program in Indiana.”).
 - **North Star Metric:** Identify the most critical measure of success for the school that aligns with the school's Value Proposition.
 - **Tactical Implementation:** Develop strategies to address one Key Objective at a time, removing barriers to progress and ensuring effective execution.
 - **Program Optimization:** Identify and eliminate ineffective programs and activities to streamline focus.

Ongoing Support and Accountability

7. **Post-Training Support:**
- **Focused Coaching:** Maintain momentum with weekly virtual meetings led by Accountability Navigators—experienced school improvement coaches who guide teams in staying focused.
 - **Budget Alignment:** Assist in aligning budgets with improvement strategies.
 - **Comparative Analysis:** Evaluate program results against similar schools not participating in the program.
 - **Year-End Assessment:** Provide a comprehensive review of program outcomes.
 - **Monthly Reporting:** Deliver progress updates to the superintendent regarding each school's achievements and challenges.
 - **Satisfaction Guarantee:** Offer a second year of coaching at no cost if the school is dissatisfied with the first-year results.
 - **Community Communication Plan:** Help construct a plan to effectively communicate the North Star Metric and progress to the school community.

Educentric’s Expectations

8. **Principals**
- **Leadership:** Principals should ‘own’ and articulate a clear vision for how the North Star Metric framework will significantly improve student outcomes.
 1. Dedicate at least 65% of your time to working with staff to implement strategies designed by the school team to address Key Objectives—the obstacles that are preventing your school from moving from its current state towards its big goal, its North Star Metric.
 2. Ensure that their school budget supports the school’s improvement strategies.
 3. Expect a strong focus on students and engagement, ensuring that Key Objective strategies are tailored to enhance student learning and well-being.

- **Advocacy for Change:** They should be advocates for the NSM framework within the broader educational landscape, promoting its benefits and success to garner support from the community and district.
- **Weekly Accountability Navigator Meeting:** Promptly attend weekly check-in meeting with Accountability Navigator.
- **Culture:** Establish an interdependent culture that emphasizes collaboration and mutual support among team members; a culture of trust and openness where teachers are free to express opinions and take risks.
- **Expectations:** Have high expectations for student and staff performance. View individuals through the lens of “I think this person is on a learning journey and is capable, resourceful, and full of potential.” versus “I think this person is a problem.”

9. Team Members:

- **Leadership:** Breakthrough performance team members should ‘own’ and articulate a clear vision for how the North Star Metric framework will significantly improve student outcomes.
 1. Expect a strong focus on students and engagement, ensuring that Key Objective strategies are tailored to enhance student learning and well-being.
 2. Take the lead on specific projects or initiatives within the team, leveraging their expertise to drive change.
- **Time:** Commit to spending time working on what matters and discontinue ineffective practices that do not produce breakthrough performance.
- **Collaboration and Teamwork:** Should be open to new ideas and approaches, willing to experiment with different teaching methods and practices as part of the breakthrough initiatives.
 1. Actively engage with their colleagues, sharing ideas and strategies, and contributing to a positive team dynamic focused on improvement.
 2. Approach challenges with a solutions-oriented mindset, collaborative brainstorming ways to overcome obstacles to implementation.
- **Weekly Accountability Navigator Meeting:** Promptly attend weekly check-in meeting with Accountability Navigator.
 1. Individuals are accountable not only for their own roles but also for the overall success of the team.
- **Data-Driven Mindset:** Embrace the use of formative data to assess student performance, identify areas for improvement, and adjust their instructional practices accordingly.
- **Expectations:** Have high expectations for student and staff performance. View individuals through the lens of “I think this person is on a learning journey and is capable, resourceful, and full of potential.” versus “I think this person is a problem.”

Our Philosophy

Educentric believes that meaningful progress is achieved not by adding new initiatives, but by removing ineffective practices and focusing on what truly matters. As we work alongside central

office staff and school breakthrough performance teams, we emphasize that breakthrough results require a commitment to change, including the elimination of outdated practices. We believe that while new is not always better, better is almost always new. Our framework empowers schools to embrace transformative practices that lead to exceptional student outcomes.

By partnering with Educentric, schools will embark on a journey of breakthrough performance, grounded in a proven framework that has transformed both businesses and school districts. Together, we will cultivate an environment where breakthrough performance is not just a goal but a reality.

The Transformative Power of Educentric's NSM Framework: A Case Study from Houston, Texas

District Overview: Houston ISD's Singular Focus on Success

Houston Independent School District (HISD), one of the largest urban districts in the U.S., set an extraordinary example by embracing a singular focus strategy from 2009 to 2016. By prioritizing a clear, data-driven metric framework, HISD became the only district to win the prestigious Broad Prize in Education twice, a testament to its groundbreaking transformation. This period saw the district expand from 200,000 to 220,000 students, a remarkable achievement during a time when many urban districts were losing students to charter and private schools. The Texas Education Commissioner of Education was so impressed with HISD's progress, he abolished the failing, adjoining, North Forest Independent School District (NFISD) and force merged it into HISD. Within three years, none of the 11 NFISD schools were rated as failing schools.

Wisdom High School: The Power of Focus in a Diverse Landscape

At **Wisdom High School**, a campus where 95% of students are economically disadvantaged and 30% are newcomers (recent immigrants to the U.S.), challenges abounded. However, by implementing a **singular focus framework**, the school was able to make substantial strides in a relatively short time.

Racial Composition:

- Hispanic: 91%
- African American: 5%
- Asian: 2%
- White: 1%
- Other: 1%

By zeroing in on a **singular goal**—improving the student graduation rate—Wisdom High School transformed its academic landscape:

- **Dropout Rate:** Reduced from 14.8% to 11.5%
- **Graduation Rate:** Jumped from 74% to 90%
- **Scholarship Funds:** Increased from \$2.8M to \$9.2M, dramatically increasing post-secondary opportunities
- **National Merit Finalists:** Increased from 0 to 6, reflecting a 600% improvement

The **singular focus** approach on reducing the dropout rate allowed Wisdom High School to transform student achievement into a tangible success. By prioritizing this key metric amid significant economic and cultural diversity, the school demonstrated that a data-driven focus can effectively generate meaningful results, even in complex environments.

Young Women’s College Preparatory Academy (YWCPA): Excellence in Action

The **Young Women’s College Preparatory Academy (YWCPA)**, a STEM-focused Title I magnet school for girls, embodies academic rigor and singular focus. With a mission to prepare young women for Tier I/Ivy League colleges, YWCPA consistently meets its goals despite having a student body where 70% are economically disadvantaged.

Racial Composition:

- Hispanic: 43%
- African American: 50%
- Asian: 2%
- White: 3%
- Other: 2%

Focusing on a **singular metric**, increasing admission to Tier I/Ivey League colleges, YWCPA delivered these results:

- **Graduation Rate:** Produced a graduation rate of 97%
- **Advanced Placement Success:** 91% of seniors passed at least one AP exam
- **Tier I/Ivy League Acceptances:** Increased from 21% in year one to 100% in four years
- **National Ranking:** Ranked #1 among HISD high schools and #94 nationally by U.S. News & World Report
- **State Rating:** Earned an ‘A’ rating from the Texas Education Agency, with special recognition for closing achievement gaps
- **Dropout Rate:** Less than 1%

By adopting a **singular focus framework**, YWCPA demonstrated how focus on a singular metric can close achievement gaps, propel students into elite institutions, and establish a culture of success.

Baylor College of Medicine Academy at Ryan (BCMAR): Medical Excellence Through Singular Focus

BCMAR, a Title I magnet middle school, was transformed from the low-performing Ryan Middle School into a cutting-edge health science academy in 2013. By leveraging a **singular focus** of preparing their students to gain admission to DeBakey High School of Medical Careers, BCMAR overcame years of underperformance and low enrollment.

Racial Composition:

- Hispanic: 42%
- African American: 49%
- Asian: 4%

- White: 3%
- Other: 2%

BCMAR's results after adopting a **singular focus framework** were remarkable:

- **Enrollment:** Grew from 265 students in 2012 to over 800 by 2016, with a waiting list of 500 students
- **State Rating:** Improved from an "F" to an "A" in four years
- **State Ranking:** Jumped from 1,605th out of 2,014 middle schools to 14th out of 2,176

This transformation is a testament to the power of focused, singular goals, even in schools facing significant socioeconomic challenges.

Robinson Elementary: Closing the Achievement Gap with Singular Focus

At **Robinson Elementary**, a Title I neighborhood school, over 98% of students come from economically disadvantaged backgrounds. In 2010, the school faced a significant math achievement gap, with minority students performing eight months behind white students district wide. By adopting a **singular focus** on math proficiency, Robinson Elementary established a clear **Value Proposition**: to eliminate the achievement gap.

Racial Composition:

- Hispanic: 77%
- African American: 21%
- White: 2%

Within three years of **focusing solely** on improving math proficiency, Robinson Elementary achieved:

- **State Rating:** Improved from 'Unacceptable' to 'Met Standard'
- **Math Proficiency:** Closed the achievement gap by improving proficiency rates by 30 percentage points

The **singular focus framework** enabled Robinson Elementary to eliminate the district-wide gap that existed between the school's math performance and that of the White and non-socio economic student populations.

Why Educentric's NSM Framework Works

The achievements of **Wisdom High School**, **YWCPA**, **BCMAR**, and **Robinson Elementary** underscore the effectiveness of the singular focus framework that is the linchpin of **Educentric's**

Breakthrough Performance Model. By helping schools focus on a singular, clear metric that drives all decisions, schools create environments where rapid, measurable progress is not just possible—it's inevitable.

With Educentric's NSM framework, schools can align their resources, staff, and strategies toward achieving one essential goal, leading to breakthrough performance, just as demonstrated in Houston ISD. The results speak for themselves, and with **Educentric's coaching and support**, your school can achieve these same transformative outcomes—guaranteed, or your second year of coaching is free.

Let **Educentric** guide your school to success through the **power of singular focus**.

**PURCHASING DEPARTMENT
WASHINGTON COUNTY BOARD OF EDUCATION**

Purchase Order **No 3737**

Date Issued 11/21/24

Appropriation No. 141-E-71300-730-002

Dept. ISM

School DCHS

PURCHASE ORDER

TO Smith Garage Equipment

Deliver to David Crockett High School
Address 684 Old State Rte 34
Jonesborough, TN 37659
Via David Pugh

Articles on this order must be charged to account of

NOTICE TO VENDOR

1. Purchase order **MUST** bear two signatures in order to be valid.
2. Purchase order number **MUST** appear on all invoices submitted for payment.
3. Mail **TWO** copies of your invoice promptly to:

Washington County Board of Education
405 West College Street
Jonesborough, TN 37659
Telephone (423) 753-1105

ARTICLES OR SERVICES	CODE	QUANTITY & UNIT	UNIT PRICE	TOTAL
(Unless otherwise stated all prices F.O.B. Destination)				
Automotive Alignment System				\$ 32,020. ⁷⁸
GRAND TOTAL - INCLUDING ALL ATTACHED PAGES				\$ 32,020. ⁷⁸

SUBJECT TO THE FOLLOWING CONDITIONS

1. All packages, cartons or other containers must be plainly marked with the purchase order number.
2. The right is reserved to purchase in the open market and to charge the difference to the Vendor in the event that deliveries are not made at the time specified in the bid and on this order.
3. Whenever a delivery is rejected, the Vendor shall be notified and be given the reason for the rejection. All rejected deliveries shall be held at the Vendor's risk and he shall bear the expense of removal.
4. Acceptance of this order includes acceptance of all terms, prices, delivery, instructions, specifications and conditions stated.
5. The county is not liable for Federal excise tax or state sales tax.
6. Each shipment and/or each purchase order should be covered by separate invoice.

IMPORTANT: INVOICES AND PACKAGES MUST BEAR PURCHASE ORDER NUMBER

VENDOR'S COPY

There is an otherwise unincumbered balance to the credit of the proper appropriation, allotment or fund to meet the expenditure covered by this purchase.

Authorized Signature

APPROVED:

Purchasing Agent

64

PURCHASING DEPARTMENT
WASHINGTON COUNTY BOARD OF EDUCATION

Purchase Order **No 4087**
 Date Issued **11/11/2024**
 Appropriation No. **72210-524**
 Dept. **Academic Dept.**
 School **District**

PURCHASE ORDER

TO **Scholarus- Education Element**
17177 N. Laurel Park DR.
Suite/233 Livonia, MI 48152

Deliver to **WCDE**
 Address **405 West College Street**
 Via **Jonesborough, TN 37659**

NOTICE TO VENDOR

1. Purchase order **MUST** bear two signatures in order to be valid.
2. Purchase order number **MUST** appear on all invoices submitted for payment.
3. Mail **TWO** copies of your invoice promptly to:

Washington County Board of Education
405 West College Street
Jonesborough, TN 37659
Telephone (423) 753-1105

Articles on this order must be charged to account of

ARTICLES OR SERVICES	CODE	QUANTITY & UNIT	UNIT PRICE	TOTAL
(Unless otherwise stated all prices F.O.B. Destination)				
Professional Services - Personalized learning sci & SS teachers Services 7/1/24 - 12/31/2024 (Extended to 2025) 2nd part of service 1st part - P.O. Reference 35411 BCE approved 2/1/24			\$	142,907
GRAND TOTAL - INCLUDING ALL ATTACHED PAGES			\$	142,907

SUBJECT TO THE FOLLOWING CONDITIONS

1. All packages, cartons or other containers must be plainly marked with the purchase order number.
2. The right is reserved to purchase in the open market and to charge the difference to the Vendor in the event that deliveries are not made at the time specified in the bid and on this order.
3. Whenever a delivery is rejected, the Vendor shall be notified and be given the reason for the rejection. All rejected deliveries shall be held at the Vendor's risk and he shall bear the expense of removal.
4. Acceptance of this order includes acceptance of all terms, prices, delivery, instructions, specifications and conditions stated.
5. The county is not liable for Federal excise tax or state sales tax.
6. Each shipment and/or each purchase order should be covered by separate invoice.

IMPORTANT: INVOICES AND PACKAGES MUST BEAR PURCHASE ORDER NUMBER

VENDOR'S COPY	There is an otherwise unincumbered balance to the credit of the proper appropriation, allotment or fund to meet the expenditure covered by this purchase.	APPROVED:
	Authorized Signature	Purchasing Agent



17177 N. Laurel Park Drive, Suite
 233 Livonia, MI 48152
 www.scholarus.com
 bizops@scholarus.com

SCHOLARUS LEARNING ORDER FORM 2024-02A

EE Partner:	Brian Seay
Pricing Valid to:	12/06/2024
Type:	Existing Customer

Customer Information

Organization Name:	Washington County Schools
Customer Contact Name:	Jerry Boyd, Superintendent Copy: Cindy Hayes
Customer Phone:	(931)260-6091
Customer Email:	boydj@wcde.org hayesc@wcde.org

Billing Contact Name:	Brad Hale
Billing Address:	405 West College Street Jonesborough, TN 37659
Billing Phone:	423-753-1100
Billing Email:	haleb@wcde.org

Invoices will be delivered via email.

This Order Form **2024-02A** replaces Order Form 2024-02 fully executed on February 07, 2024 and is subject to and incorporates the terms and conditions of the Scholarus Learning Master Services Agreement located at [<https://www.scholarus.com/msa-surveys-and-services>] (the "**Master Services Agreement**") and is entered as of **November 05, 2024** between XanEdu Publishing, Inc. (dba Education Elements), a Delaware corporation having its principal place of business at 17177 N. Laurel Park Drive, Suite 233 Livonia, MI 48152 ("**Company**") and Washington County Schools ("**Customer**"). In the event of any conflict or inconsistency between this Order Form and the Master Services Agreement, this Order Form will prevail. Any capitalized term not defined in this Order Form will have the meaning given to it in the Master Services Agreement. Any terms and conditions in any purchase order or other ordering document issued by Customer that are inconsistent with or in addition to the terms and conditions of the Master Services Agreement and this Order Form are hereby rejected by the parties and will be deemed null and of no effect.

Offering

Services Fees (See Appendix A for additional details)

Service Name	Service Description	Dates	Fees
Professional Services	Education Elements will provide Part 2 of personalized learning implementation and survey services.	07/01/2024 - 5/31/2025	\$142,907.00

Total Fees: \$142,907.00



17177 N. Laurel Park Drive, Suite
 233 Livonia, MI 48152
 www.scholarus.com
 bizops@scholarus.com

Payment Schedule

Payment Schedule	Amount	Invoice Date	Payment Due Date
Professional Services	\$71,453.50	12/06/2024	Net 30
Tripod Survey Services	\$71,453.50	02/01/2025	Net 30

Total Fees: \$142,907.00

Special Terms

- None

By signing below, Customer hereby agrees (i) to be bound by the terms of this Order Form and of the Master Services Agreement and (ii) that this Order Form will be legally binding unless this Order Form is rejected by Company. The signatory below on behalf of Customer represents to Company that they (a) have full authority to bind Customer to this Order Form and the Master Services Agreement and (b) has read and understands this Order Form and the Master Services Agreement.

Acknowledged and Agreed

CUSTOMER: Washington County Schools

COMPANY: XanEdu Publishing, Inc.

Signature: _____

Signature: _____

Name: _____

Name: _____

Title: _____

Title: _____

Date: _____

Date: _____

PURCHASING DEPARTMENT
WASHINGTON COUNTY BOARD OF EDUCATION

Purchase Order **No 4266**

Date Issued 11/20/24

Appropriation No. 141-E-71100-722-002

Dept. ISM

School DCHS

PURCHASE ORDER

TO Inspire Business Interiors
 725 W. Walnut St.
 Johnson City, TN 37604

Deliver to David Crockett High School
 Address 684 Old State Rte 34
 Jonesborough, TN 37659

Via Amy Collette

Articles on this order must be charged to account of

NOTICE TO VENDOR

1. Purchase order **MUST** bear two signatures in order to be valid.
2. Purchase order number **MUST** appear on all invoices submitted for payment.
3. Mail **TWO** copies of your invoice promptly to:

Washington County Board of Education
 405 West College Street
 Jonesborough, TN 37659
 Telephone (423) 753-1105

ARTICLES OR SERVICES	CODE	QUANTITY & UNIT	UNIT PRICE	TOTAL
(Unless otherwise stated all prices F.O.B. Destination)				
Please see attached quote				
*OMNIA #R191804				
GRAND TOTAL - INCLUDING ALL ATTACHED PAGES				\$18,030.42

SUBJECT TO THE FOLLOWING CONDITIONS

1. All packages, cartons or other containers must be plainly marked with the purchase order number.
2. The right is reserved to purchase in the open market and to charge the difference to the Vendor in the event that deliveries are not made at the time specified in the bid and on this order.
3. Whenever a delivery is rejected, the Vendor shall be notified and be given the reason for the rejection. All rejected deliveries shall be held at the Vendor's risk and he shall bear the expense of removal.
4. Acceptance of this order includes acceptance of all terms, prices, delivery, instructions, specifications and conditions stated.
5. The county is not liable for Federal excise tax or state sales tax.
6. Each shipment and/or each purchase order should be covered by separate invoice.

IMPORTANT: INVOICES AND PACKAGES MUST BEAR PURCHASE ORDER NUMBER

VENDOR'S COPY

There is an otherwise unincumbered balance to the credit of the proper appropriation, allotment or fund to meet the expenditure covered by this purchase.

Authorized Signature

APPROVED:

Purchasing Agent



725 West Walnut Street
 Johnson City, TN 37604
 PH: 423-282-5400
www.inspirebusinessinteriors.com

Date Printed: 11/15/2024
 Valid 30 Days From Print
 Sales Name: Tracy Johnson
 Sales Phone:

SOLD TO:

Washington County Schools
 405 W. College St.
 Jonesborough, TN 37659

SHIP TO:

Washington County Schools
 405 W. College St.
 Jonesborough, TN 37659

Sales Number:

PROPOSAL


DCHS Bookstore Renovation Furniture OMNIA #R191804

LINE	IMAGE	QTY	PRODUCT	UNIT SELL	EXT SELL
1		5	HTLCRED42S Preside 20x42 36H Hospitality Credenza w/Shelf Laminate Top Selection, Select Grade 1 Laminate Finish, Select Edge Color, Laminate Chassis Selection, Select Grade 2 Laminate Finish, Select Pull, Back Cutout Selection, Laminate Shelf Selection, Select Grade 1 Laminate Finish	\$1,245.60	\$6,228.00
			Grd L1 Standard Laminates Charcoal Charcoal Grd L2 Standard Laminates Beigewood Rounded Square Black No Cutout Grd L1 Standard Laminates Charcoal		

2	3	HITSRA		\$478.35	\$1,435.05
		Ign 2.0 ReActiv Stool			
		Select Control Type, Select Arm Type, Select Caster/Glide Option, Select Back, Select Upholstery, Upholstery Selection, Route, Select Lumbar, Select Base, Select Frame Color	Stool Synchro-Tilt Height and Width Adj. Arm Hard Caster Charcoal Grade 6 Uph Route Chamois Black Adjustable Lumbar Standard Base Black		
3	1	HSISLAUTPNB7236S2		\$378.45	\$378.45
		Islds Top 36Dx72W Span 2			
		Laminate Grade Options, Select Grade 2 Laminate Finish, Select Edgeband Color	Grd L2 Standard Laminate Beigewood Beigewood		
4	2	HFSC183640W		\$510.56	\$1,021.12
		Flagship Bookcase 3-shelf 36"W x 18"D x 39-1/8"H			
		Select Paint Color, Select Grade 1 Paint	P1 Paint Opts Charcoal		
5	4	HFSC183640R		\$632.20	\$2,528.80
		Flagship Stg Cab 39 1/8Hx36Wx18D R Pulls-2 Adj Shlf			
		Lock/Omt Opts, Select Paint Color, Select Grade 1 Paint	Standard Random Key Lock P1 Paint Opts Charcoal		

LINE	IMAGE	QTY	PRODUCT	UNIT SELL	EXT SELL
6		2	H919436	\$326.13	\$652.26
			36Wx18D Square Edge Laminate Top For Lateral File		
			Select Laminate, Select Grade 2 Laminate Finish	Grd L2 Standard Laminates Beigewood	

LINE	IMAGE	QTY	PRODUCT	UNIT SELL	EXT SELL
7		1	H105292	\$332.10	\$332.10
			1050 Series Bookcase Hutch 36"W x 37-1/8"H		
			Select Top Laminate Color, Select Top Laminate Color, Select Chassis Laminate Color	Grd L2 Standard Laminates Beigewood Beigewood	

LINE	IMAGE	QTY	PRODUCT	UNIT SELL	EXT SELL
8		10	HTLSHELF	\$46.80	\$468.00
			Preside Laminate Credenza Shelf		
			Select Laminate, Select Grade 2 Laminate Finish	Grd L2 Standard Laminates Beigewood	

LINE	IMAGE	QTY	PRODUCT	UNIT SELL	EXT SELL
9		8	P13838050	\$367.08	\$2,936.64
			Demco Slatwall Display Panel 36" x 36" x 1"		
			FINISHSELECTION	Finish Selection TBD	

LINE	IMAGE	QTY	PRODUCT	UNIT SELL	EXT SELL
10		1		\$750.00	\$750.00
			Design coordination, finish selections		

LINE	IMAGE	QTY	PRODUCT	UNIT SELL	EXT SELL
11		1		\$1,300.00	\$1,300.00
			Delivery & Installation		

GRAND TOTAL \$18,030.42

Notes:

Signature: _____ Date: _____ PO #: _____

Approved By: _____ Title: _____

TERMS & CONDITIONS

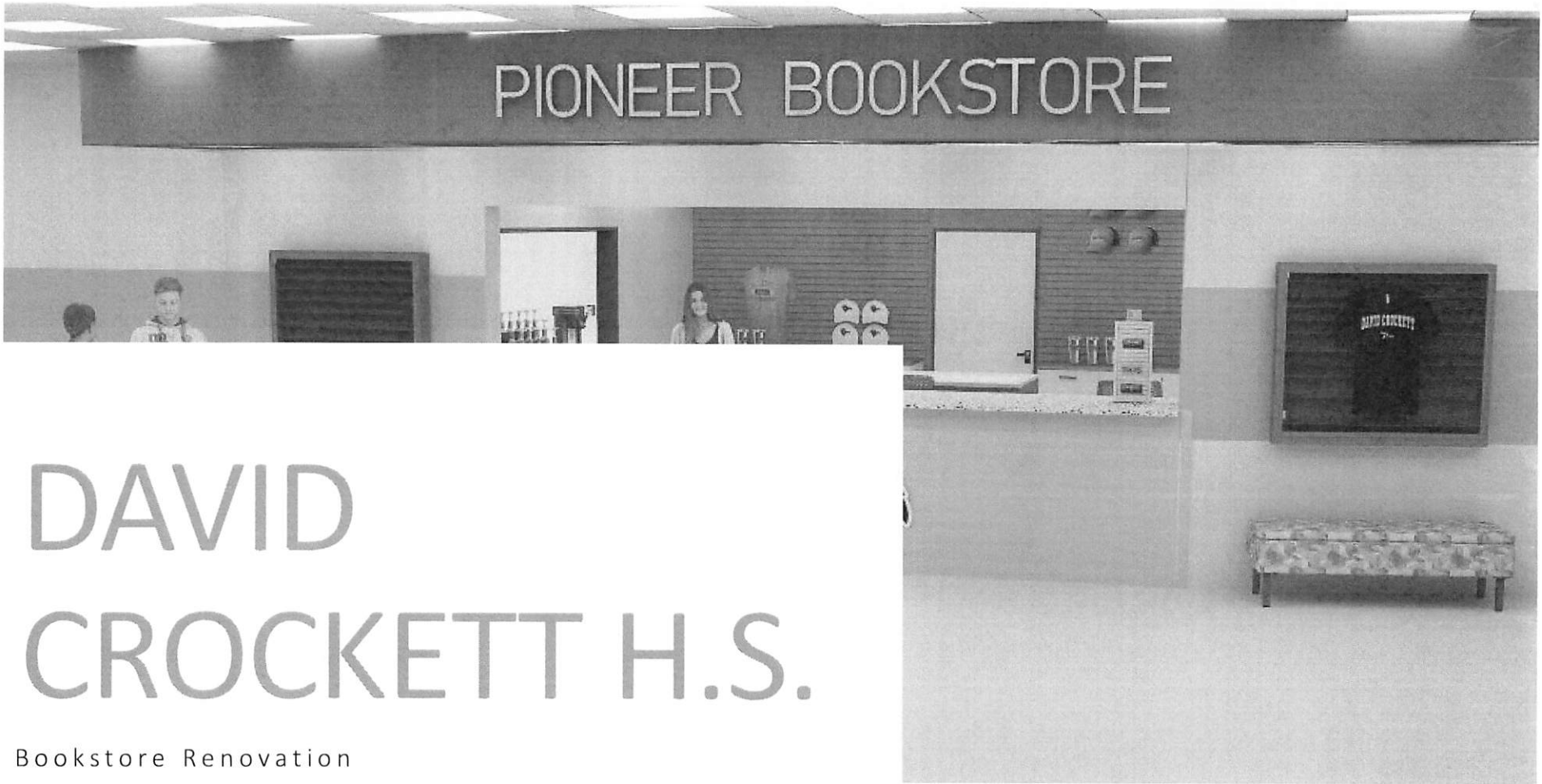
Notes:

Pricing does not include sales tax. Freight, if any, will be added at the time of invoice. A signature is needed to proceed with order. Payment terms: 50% deposit upon order. Net 20 upon final invoice.

Terms:

Client agrees that the list of items herein has been reviewed and accurately sets forth the items to be purchased. The client acknowledges and agrees that the items to be purchased are made to order and may not be returned and that the purchase of the items is final. The client agrees to pay the purchase price according to net 20 days payment terms. Any unpaid balance shall accrue interest of 1 1/2% per month. Buyer agrees to pay the balance, as extended, together with all cost of collection, including reasonable attorney's fees and court costs if collection by law or by an attorney at law is necessary.

PIONEER BOOKSTORE



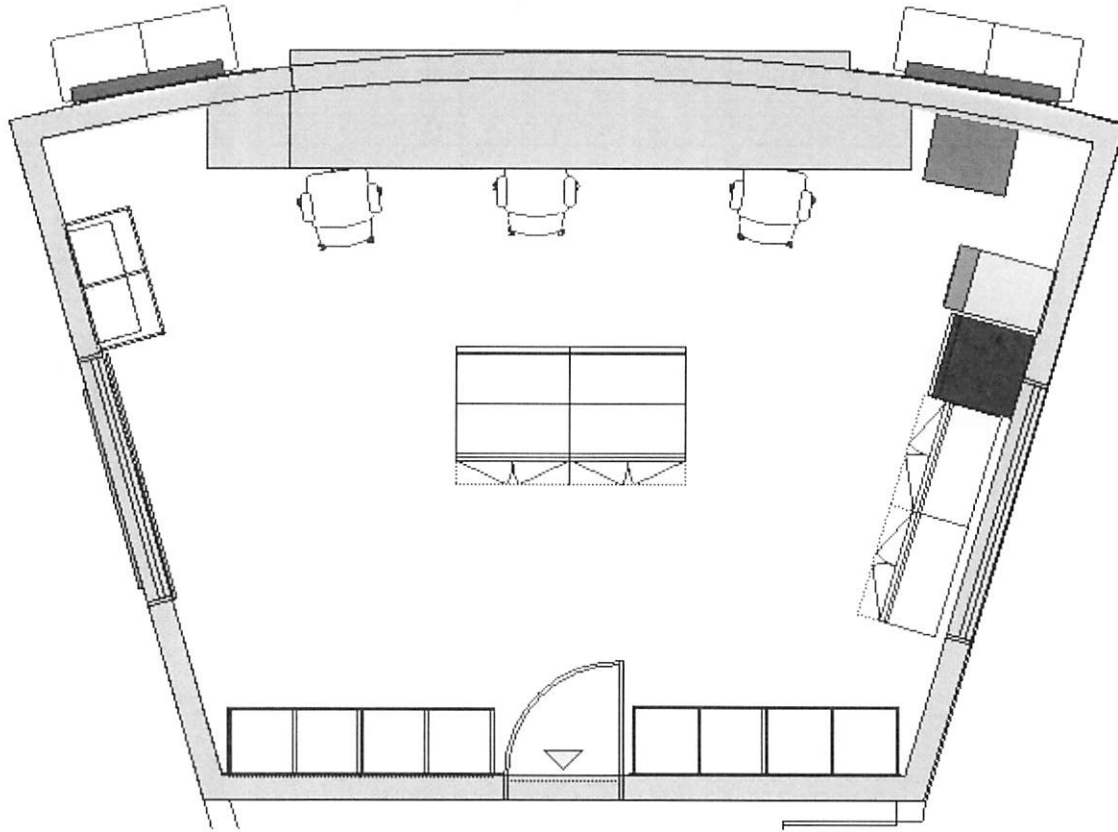
INSPIRE BUSINESS INTERIORS

DAVID CROCKETT H.S.

Bookstore Renovation



FLOOR PLAN

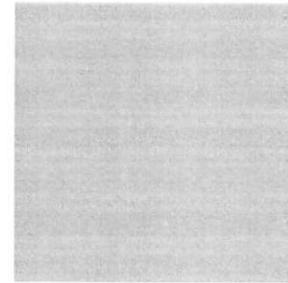
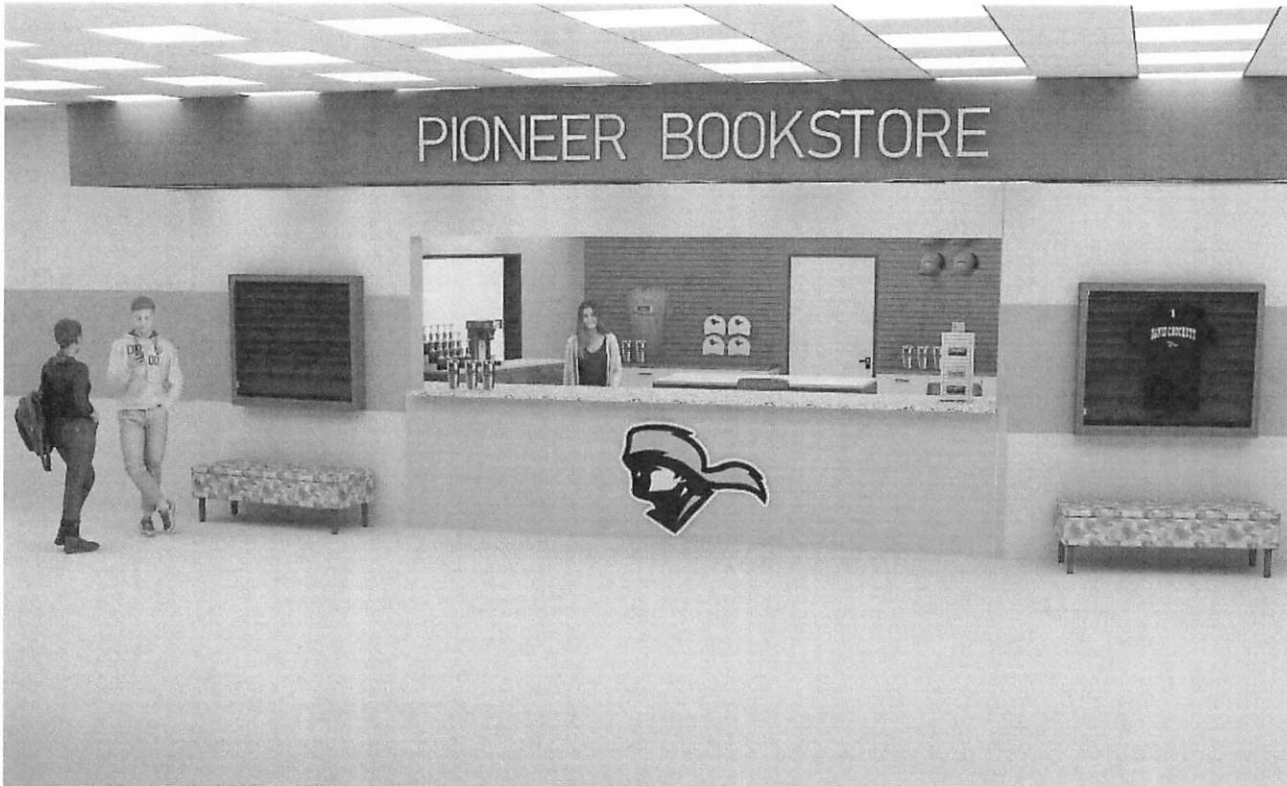


- Front counter with roll out shelves
- Sno-Cone area set at 40" H, laminate topped closed storage
- Middle island contains 2 open shelving units on front, 2 closed units on back,
- Slat walls span back wall with closed storage underneath
- Encloses left window for storefront display

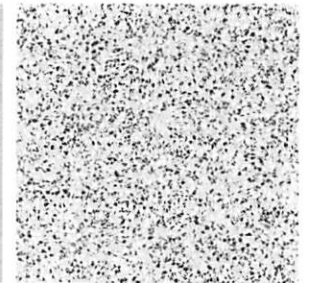


LOBBY

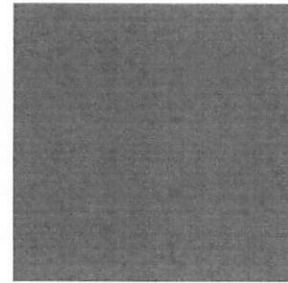
INSPIRE BUSINESS INTERIORS



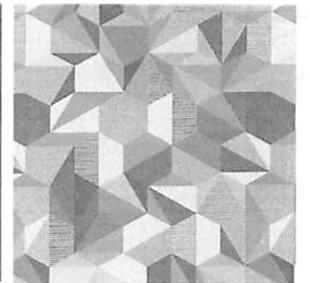
Wilsonart Beigewood



Solid Surface Counters



SW Peppercorn
(Accent Wall)



Stinson Polygon
Sandalwood

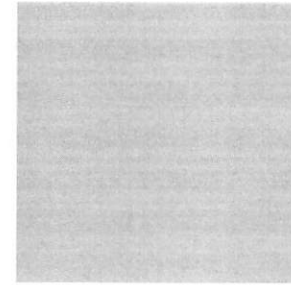


HON Astir Bench

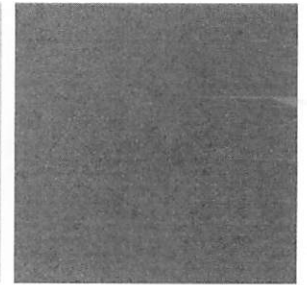


INTERIOR

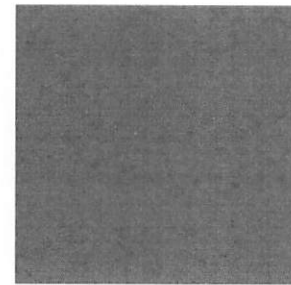
INSPIRE BUSINESS INTERIORS



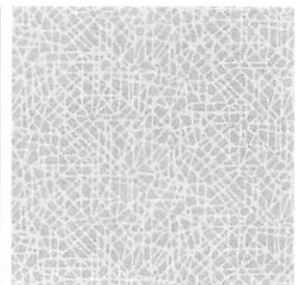
Wilsonart Beigewood



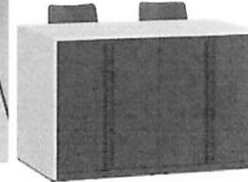
HON Charcoal



SW Peppercorn
(Accent Wall)



Stinson Route
Chamois



HON Storage
Islands



HON Ignition
Stool

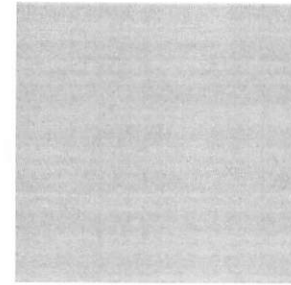
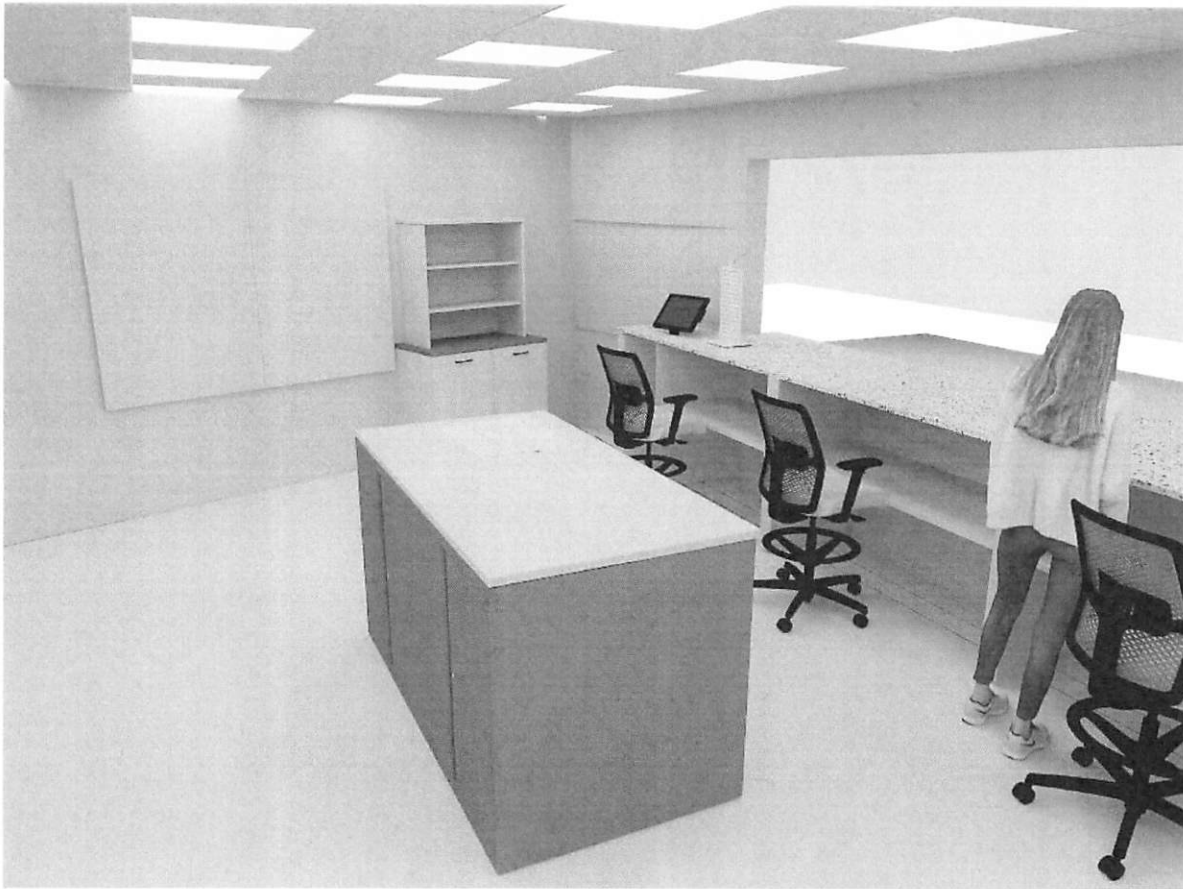


HON Preside
Hospitality Credenza

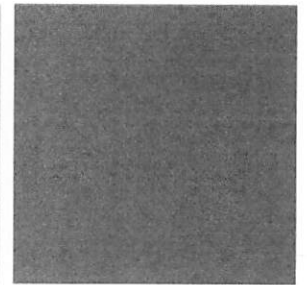


INTERIOR

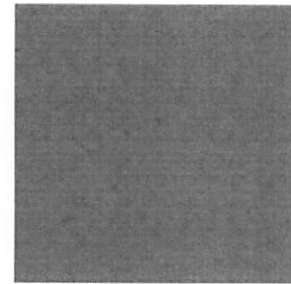
INSPIRE BUSINESS INTERIORS



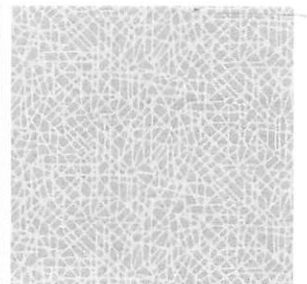
Wilsonart Beigewood



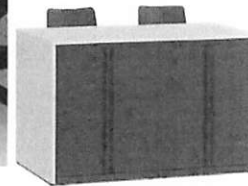
HON Charcoal



SW Peppercorn
(Accent Wall)



Stinson Route
Chamois



HON Storage
Islands



HON Ignition
Stool

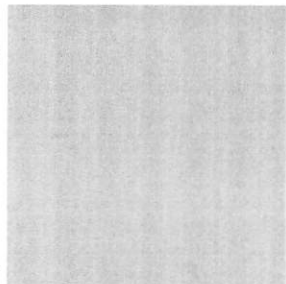


HON Preside
Hospitality Credenza

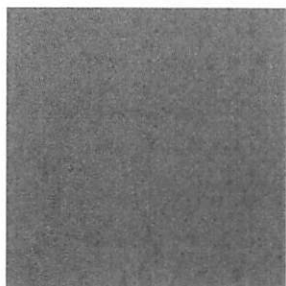




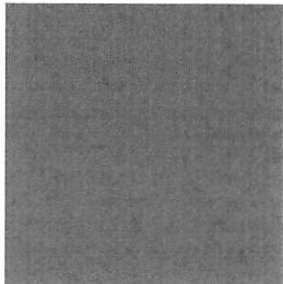
WINDOW DISPLAY



Wilsonart Beigewood



HON Charcoal



SW Peppercorn
(Accent Wall)



 Inspire Business Interiors
 (423) 282 5400
 info@inspirebusinessinteriors.com



INSPIRE BUSINESS INTERIORS

THANK YOU

<https://www.inspirebusinessinteriors.com/>



PURCHASING DEPARTMENT
WASHINGTON COUNTY BOARD OF EDUCATION

Purchase Order **No 4268**

Date Issued 11/21/24

Appropriation No. 141-E-71300-730-002

Dept. ISM

School DCHS

PURCHASE ORDER

TO Smith Garage Equipment

Deliver to David Crockett High School
 Address 684 Old State Rte 34
 Jonesborough, TN 37659
 Via David Rugh

Articles on this order must be charged to account of

NOTICE TO VENDOR

1. Purchase order **MUST** bear two signatures in order to be valid.
2. Purchase order number **MUST** appear on all invoices submitted for payment.
3. Mail **TWO** copies of your invoice promptly to:

Washington County Board of Education
 405 West College Street
 Jonesborough, TN 37659
 Telephone (423) 753-1105

ARTICLES OR SERVICES	CODE	QUANTITY & UNIT	UNIT PRICE	TOTAL
(Unless otherwise stated all prices F.O.B. Destination)				
Automotive Fully Integrated Alignment Scissor lift				\$35,926. ⁰⁵
GRAND TOTAL - INCLUDING ALL ATTACHED PAGES				\$35,926.⁰⁵

SUBJECT TO THE FOLLOWING CONDITIONS

KH

1. All packages, cartons or other containers must be plainly marked with the purchase order number.
2. The right is reserved to purchase in the open market and to charge the difference to the Vendor in the event that deliveries are not made at the time specified in the bid and on this order.
3. Whenever a delivery is rejected, the Vendor shall be notified and be given the reason for the rejection. All rejected deliveries shall be held at the Vendor's risk and he shall bear the expense of removal.
4. Acceptance of this order includes acceptance of all terms, prices, delivery, instructions, specifications and conditions stated.
5. The county is not liable for Federal excise tax or state sales tax.
6. Each shipment and/or each purchase order should be covered by separate invoice.

IMPORTANT: INVOICES AND PACKAGES MUST BEAR PURCHASE ORDER NUMBER

VENDOR'S COPY

There is an otherwise unincumbered balance to the credit of the proper appropriation, allotment or fund to meet the expenditure covered by this purchase.

Authorized Signature

APPROVED:

Purchasing Agent

PURCHASING DEPARTMENT
WASHINGTON COUNTY BOARD OF EDUCATION

PURCHASE ORDER

Purchase Order **No 4283**

Date Issued **11/13/24**

Appropriation No. **72710729**

Dept. **Transportation/**

School **Vehicle**

TO

Valley Trailer

L

Deliver to

Washington County Schools

Address

Via

Articles on this order must be charged to account of

NOTICE TO VENDOR

1. Purchase order **MUST** bear two signatures in order to be valid.
2. Purchase order number **MUST** appear on all invoices submitted for payment.
3. Mail **TWO** copies of your invoice promptly to:

Washington County Board of Education
 405 West College Street
 Jonesborough, TN 37659
 Telephone (423) 753-1105

ARTICLES OR SERVICES (Unless otherwise stated all prices F.O.B. Destination)	CODE	QUANTITY & UNIT	UNIT PRICE	TOTAL
<i>Lift Gate for Van for Nutrition w/ installation</i>				<i>\$10,251⁰⁰</i>
<i>* Price Quotes Attached</i>				
GRAND TOTAL - INCLUDING ALL ATTACHED PAGES				<i>\$10,251⁰⁰</i>

SUBJECT TO THE FOLLOWING CONDITIONS

1. All packages, cartons or other containers must be plainly marked with the purchase order number.
2. The right is reserved to purchase in the open market and to charge the difference to the Vendor in the event that deliveries are not made at the time specified in the bid and on this order.
3. Whenever a delivery is rejected, the Vendor shall be notified and be given the reason for the rejection. All rejected deliveries shall be held at the Vendor's risk and he shall bear the expense of removal.
4. Acceptance of this order includes acceptance of all terms, prices, delivery, instructions, specifications and conditions stated.
5. The county is not liable for Federal excise tax or state sales tax.
6. Each shipment and/or each purchase order should be covered by separate invoice.

IMPORTANT: INVOICES AND PACKAGES MUST BEAR PURCHASE ORDER NUMBER

(Signature)

VENDOR'S COPY

There is an otherwise unincumbered balance to the credit of the proper appropriation, allotment or fund to meet the expenditure covered by this purchase.

Authorized Signature

APPROVED:

Purchasing Agent

PRICE INQUIRY FORM
Washington County Schools

Vendor	Description of item for price comparison	Price Quoted
Company U.S. Upfitters Address 980 Lombard Rd ILL. Person Contacted 630 652-1200 Date 10-30-24	Lift Gate + INSTALL	7,762.00 9,000.00 <hr/> 16,762.00
Company PAFCO Bodies Address 1954 E. Washington St. ILL Person Contacted 309 699 4613 Date 10-30-24	Lift Gate + Install Depends	7,797.00 2 to 10,000
Company Valley Trailer Address Jonesborough Person Contacted Date	// Lift Gate + Install	\$10,251.00

No Quote

Name of person obtaining inquiry

PRICE INQUIRY FORM
Washington County Schools

Vendor	Description of item for price comparison	Price Quoted
<p>Company Knox Trailers</p> <p>Address 2607 Middlebrook Pike Knoxville TN</p> <p>Person Contacted 10-29-24</p> <p>Date 865 523 1115</p>		<p>No Call Back</p> <hr/> <p>Called Back 10-31 <u>NO QUOTE</u></p>
<p>Company Lake Amusement</p> <p>Address 824 St. Street Bristol TN</p> <p>Person Contacted 10-29-24</p> <p>Date 423 764 8383</p>		<p>No call BACK</p>
<p>Company Trailer Sales</p> <p>Address 2900 Nathan St Newton NC</p> <p>Person Contacted 10-29-24</p> <p>Date 828 465 1800</p>		<p>No call Back</p>

Name of person obtaining inquiry

	A	B	C
1	Valley Trailer Repair Svc		
2	Jonesborough, TN		
3	423-753-3041		
4	Name: Washington County Schools	Attn:	
5	Address:		
6	City:	State:	
7	Phone:	E-mail: robertst@wcde.org	
8	Unit:		
9	Make:		
10	VIN#		
11			
12	<u>Estimate for Repairs</u>		
		<u>Parts</u>	<u>Labor</u>
13	1) Purchase and installation of (1) Tommylift cantilever liftgate		
14	installed on a 2023 2500 Sprinter Cargo Van with high roof.		
15		\$7,631.00	\$2,160.00
16			
17			
18			
19	Vehicle changed to (1) 2023 Ford Transit 250, 148" Midroof		
20	and one Ford 2023 Ford Transit 350, 148" WB High Roof		
21			
22			
23			
24			
25			
26			
27			
28			
29		Parts, materials, and supplies total	\$8,091.00
30		Labor Total	\$2,160.00
31		Sub Total	\$10,251.00
32		TN Sales Tax Exempt	\$0.00
33		Total	\$10,251.00
34			
35	This estimate is based on our inspection and does not cover any additional parts or		
36	labor which may be required after the work has been opened up. Occasionally, after work		
37	has started, worn or damaged parts are discovered which are not evident during the		
38	first inspection. Because of this, the above prices are not guaranteed. The above estimate		
39	is for immediate acceptance only. This estimate does NOT include any painting or decals unless		
40	specifically stated above.		

PURCHASE ORDER
28069

DANIEL BOONE HIGH SCHOOL
1440 Suncrest Drive
Gray, Tennessee 37615
423-477-1600

Date: 11-7-24

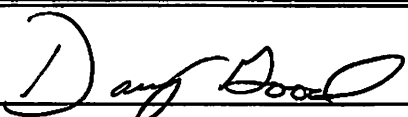
To: Bass Pro Shop / Ship To: DBHS
Cabela's \$ May
General 3/10

PART NUMBER	DESCRIPTION	QUANTITY ORDERED	PRICE	AMOUNT
	side by side - ATV to patrol the parking lots to monitor students each morning & afternoon			
				not to exceed \$19,500.00
	TOTAL			

Stephanie J.
AUTHORIZED BY

PRICE INQUIRY FORM
Washington County Schools

Vendor	Description of item for price comparison	Price Quoted
Firm Base Pro Shop Address	Tracker - ATV	
Person Contacted		
Date		19,390.00
Firm East TN ATV Address	Tracker - ATV	
Person Contacted		
Date		22,399.00
Firm John Beere Address	Tracker - ATV	
Person Contacted		
Date		20,899.00



 Name of Person Obtaining Inquiry



Plate
Type
VIN
Make

Print Contact

001, 113, 02

John Deere PTV

John Deere
John Deere

Print Contact

001, 113, 02

John Deere

John Deere PTV



TMBC, LLC - BST
 1 BASS PRO DRIVE
 BRISTOL, TN, 37621
 Phone: 423-990-5180

Date 07 NOV 2024	Stock 1450268	SQ # 1450268	Buyers Order and Agreement of Sale		Sales Person Phillip Taylor	Customer Number 2582541
Buyer STEPHANIE GRAY	Home Phone 423-477-1600	Mobile Phone	Email GRAYS2@WCDE.ORG			
Address 1440 SUNCREST DRIVE	City GRAY	State TN	Postal 37615			
CO-Buyer	Home Phone	Mobile Phone	CO-Buyer Email			

Description of Purchase			
Year 2024	Brand TRACKER OFFROAD	Model 800 SX CREW	New/Used Serial # NEW
Inclusion Description			Serial #

Manufacturer Options		Dealer Options		Qty	
		VIP	VIP DISCOUNT CARD	1.00	0.00
		PDI	PREDELIVERY INSPECTION	1.00	0.00
		970	TOR WARRANTY	1.00	0.00
		971	TRAIL KIT	1.00	2,061.00
		972	STOCK NUMBER-1490404	1.00	0.00
Extras					
TF	TIRE FEE			5.00	

ALL TRADE VALUES SUBJECT TO ADJUSTMENT IF CONDITION/EQUIPMENT ARE NOT AS REPRESENTED ON TRADE-IN AGREEMENT.

CUSTOMER ADVISED OF DESCRIPTION OF WARRANTY		PRICING	
<input type="checkbox"/>	WHEN THIS BOX IS CHECKED, THE UNIT WHICH IS THE SUBJECT OF THIS CONTRACT IS BEING SOLD ON AN "AS IS" BASIS, THE ENTIRE RISK AS TO THE QUALITY AND PERFORMANCE OF THIS UNIT IS WITH THE PURCHASER	Base Price	15,999.00
<input type="checkbox"/>	WHEN THIS BOX IS CHECKED, THE UNIT HAS A 0% COSMETIC WARRANTY	Freight & Prep	1,300.00
<input type="checkbox"/>	I WOULD LIKE MORE INFORMATION ON ADDITIONAL PRODUCT PROTECTION PLANS	Options	0.00
		Dealer Options	2,061.00
		Trade Allowance	0.00
		Sales Extras	5.00
		PDI	0.00
		Sales Price Before TTL	19,365.00
		Document Fee	25.00
		Down Payment	0.00
		Grand Total	19,390.00

METHOD OF PAYMENT C OSF Finance

I have read the terms and conditions that accompany this agreement and accept all such terms and conditions and agree to be bound by same.

CUSTOMER APPROVAL _____ DATE _____

MANAGER APPROVAL _____ DATE _____

This agreement is not final and binding on Seller unless approved and signed by a manager of Seller.

Division II – Operation/Maintenance Specifications

ENGINE	
Type	Four-Cycle/Liquid-Cooled
Bore	72 mm (2.835 in)
Stroke	66.5 mm (2.618 in)
Displacement	812 cc (49.55 cu in)
Spark Plug	F6RTC (p/n 3040-031)
Spark Plug Gap	1.0 mm (± 0.1 mm)
Target Idle RPM	950 ± 25
Max RPM	6300
CHASSIS	
Length (Overall)	320.04 cm (126 in) (800SX) 324.62 cm (127.8 in) (800SX LE)
Height (Overall)	187.96 cm (74 in)
Width (Overall)	160.02 cm (63 in)
Suspension Travel (Front/Rear)	25.4 cm (10 in) / 24.1 cm (9.5 in)
Tire Size (Front/Rear) (800SX)	26H x 9W R14 / 26H x 11W R14
Tire Size (Front/Rear) (800SX LE)	26H x 9W R14 / 26H x 11W R14
Tire Size (Front/Rear) (800SX LE)	27H x 9W R14 / 27H x 11W R14
Front Tire Inflation Pressure	(No Cargo) 12 psi (82.7 kPa) (w/Cargo) 12 psi (82.7 kPa)
Rear Tire Inflation Pressure	(No Cargo) 14 psi (96.5 kPa) (w/Cargo) 16 psi (110.3 kPa)
MISCELLANEOUS	
Dry Weight (Approx.)	724.4 kg (1597 lb) (800SX) 778.9 kg (1717 lb) (800SX LE)
Curb Weight	759.8 kg (1675 lb) (800SX) 814.2 kg (1795 lb) (800SX LE)
ROPS Tested Curb Weight	1587.6 kg (3500 lb)
Gas Tank Capacity	37.85 L (10 U.S. gal)
Coolant Capacity	5.67 L (6 U.S. qt)
Differential Capacity	198 mL (6.7 fl oz)
Transaxle Capacity	1.21 L (41.0 fl oz)
Engine Oil Capacity (Approx.)	2.37 L (2.5 U.S. qt)
Gas (Recommended)	Regular unleaded 87 octane (R+M)/2, ethanol content not to exceed 10%
Engine Oil (Recommended)	0W-40 (Synthetic)
Front Differential Lubricant	SAE-Approved 80W-90 Hypoid
Transaxle Lubricant	Transaxle Fluid with EP
Taillight/Brake Light	12.8 V — 27 W / 14 V — 8W
Headlight	12 V — 60 W/55 W
Starting System	Electric
Brake Type	Four-Wheel Hydraulic Disc Brake

Specifications subject to change without notice.

NEW 2025 Can-Am Defender MAX XT HD9



East Tennessee ATV
 106 Clay Little road
 Elizabethton, Tennessee 37643
 (423) 542-6109
 www.easttnatv.com

CUSTOMER

DATE	11/21/2024
PRICE	\$22,399.00
SALESPERSON	
SIGNATURE	

Comments

EQUIPPED TO GET IT DONE

Defender MAX XT is ready to work right out of the factory with upgrades including adaptable storage and lightweight wheels and tires.

GENERAL INFORMATION

Manufacturer	Can-Am
Model Year	2025
Model Name	Defender MAX XT HD9
Model Code	8SSK
VIN	3JBUCAP44SK001528
Stock Number	1528
Color	Stealth Black
Condition	NEW
Engine Size	976 cc
Price	\$22,399.00

FEATURES

Leading Engine

CLASS-LEADING TORQUE, QUIETER ROTAX ENGINES: HD7, HD9 & HD10 - The HD10 engine is class-leading with 69 lb-ft of torque! The break-in period, early maintenance and frequent valve adjustments are all things of the past. The powerpack design delivers an improved riding experience, with less noise & vibration.

Speed Limiter

TAME THE BEAST: You set the limits - Sometimes you just have to rein in all the power of this workhorse for seeding, crop spraying or moving cargo. With the speed limiter available on all Defenders, you're the one in control. Get ready for peak work efficiency.

SPECIFICATIONS

BRAKES/WHEELS/TIRES

Brakes	Front - Dual 220 mm disc with hydraulic twin-piston calipers Holding mechanism
Wheels	14 in. cast-aluminum
Tires	Front / Rear - XPS Trail Force 27 x 9 / 11 x 14 in.

DIMENSIONS

Length	158.3 in. (402 cm)
--------	--------------------

Height	76 in. (193 cm)
Width	63.5 in. (161.2 cm)
Weight	Estimated Dry - 1,902 lb. (863 kg)
Ground Clearance	11 in. (28 cm)
Wheelbase	115.5 in. (294 cm)
DRIVETRAIN	
Transmission	PRO-TORQ CVT with Quick Response System (QRS), high airflow ventilation and Electronic Drive Belt Protection Extra-L / H / N / R / P
Drive System	Selectable Turf Mode / 2WD / 4WD with Visco-Lok† auto-locking front differential
Drive	Driving Assistance - CVT Engine Braking ECO™ / ECO™ Off / Work modes, Speed Limiter
ELECTRICAL	
Battery	12V (30Ah)
Alternator	Magneto - 650W
Instrumentation	DC outlet (10A), USB Port (10A) x 2 Gauge - 4.5 in. wide digital display
Lighting	Front lighting output 140W, LED tail lights
ENGINE	
Engine	Rotax®, V-twin
Cooling	Liquid
Horsepower	65 hp
Displacement	976 cc
Torque	59 ft. lb.
Fuel System	Intelligent Throttle Control (ITC™) with Electronic Fuel Injection (EFI)
Fuel Capacity	10.6 gal. (40 l)
OPERATIONAL	
Frame	Chassis Cage - Profiled cage ROPS approved
Front Suspension	Double A-arm Travel - 10 in. (25.4 cm) Shocks - Twin tube gas charged
Rear Suspension	TTA with external sway bar Travel - 10 in. (25.4 cm) Shocks - Twin tube gas charged
Steering	Dynamic Power Steering (DPS) Wheel - Adjustable tilt
Seating	6 person capacity VERSA-PRO bolster bench seats with passenger seats flipping up Adjustable driver seat, underside hooks, reinforced XT seat skin
OTHER	
Additional Colors	Wildland Camo Dusty Navy Stealth Black
Cargo Box Length	38 in. (96.5 cm)
Cargo Box Height	12 in. (30.5 cm)
Cargo Box Width	54.5 in. (138.4 cm)
Cargo Box Capacity	1,000 lb. (454 kg)
Load Capacity	Tailgate - 250 lb. (113.4 kg)

Capacity	Storage Total - 16.9 gal. (63.9 l) Payload - 1,700 lb. (771 kg)
Towing Capacity	2,500 lb. (1,134 kg) Winch - 4,500 lb. (2,041 kg) with roller fairlead
Hitch	2 in. receiver
Safety Features	Protection - XT Front bumper, HMWPE full skid plate, 2-piece full hard roof
Warranty	Factory - 1-year BRP limited Extended Service Terms - B.E.S.T. term available up to 30 months

Legal Notice: Manufacturer Name, Logo and Model information are Registered Trademarks of the Manufacturer. Specifications and other information are subject to change without notice. No representation of accuracy is made. Image is believed to be in the public domain or used with permission.

***Price, if shown, is Manufacturer's Suggested Retail Price (MSRP) and does not include government fees, taxes, dealer vehicle freight/preparation, dealer document preparation charges or any finance charges (if applicable). MSRP and/or final actual sales price will vary depending on options or accessories selected.**

Search



XUV825M S4

Crossover Utility Vehicle

★★★★★ 2.9 (9) [Write a review](#)

- Multi-passenger capability for four people
- Easier shifting, with integrated park position
- Electronic switch for instant 4WD engagement
- Improved power steering for smoother operation

STARTING AT:
\$20,899.00 USD, PLUS ADDITIONAL CHARGES¹

[Order Online](#)

[Build Your Own](#)

[Find a Dealer](#) >

[View Product Brochure](#) >

[Apply for Financing](#) >

Features

[Expand All](#)

+ Conquer tough terrain with confidence

+ Built for the long haul

+ Automotive-like controls

+ Room for you, and your crew

+ Haul more in fewer trips

Specs & Compare

Key Specs

Engine power	38.8 kW 52 hp
Cargo box dimensions	1143 x 305 x 1320 mm 45 x 12 x 52 in.
Cargo box capacity (weight)	454 kg 1000 lb
Towing capacity	680 kg 1500 lb
Front suspension	Fully independent dual A-arm with adjustable coils; 203 mm (8 in.) of travel
Rear suspension	Fully independent dual A-arm with adjustable coils and sway bar; 229 mm (9 in.) of travel
Final drive	Park, high, low, neutral, reverse transaxle
Four wheel drive	Dash switch actuated four-wheel drive system
Fuel capacity	27.6 L 7.3 U.S. gal.

Engine

Type	4-cycle gas, electronic fuel injection (EFI)
Displacement	812 cc
Power	38.8 kW 52 hp
Cooling system	Liquid

Show More

Offers and Discounts

Expand All

+ 3.9% APR fixed rate for 84 months†

+ 0.9% APR fixed rate for 36 months†

+ Order Online for Free Delivery†



2024 November 05

Mr. Brad Hale, Chief Financial Officer
Washington County Schools
405 W College Street
Jonesborough, TN 37659

RE: Washington County Schools (WCS) Athletic Upgrades - Phase 1
Daniel Boone High School + David Crockett High School
Gray, TN Jonesborough, TN
LGA # 22043

Application and Certificate for Payment No. 10

Dear Mr. Hale:

Please find attached one (1) digital copy of **APPLICATION AND CERTIFICATE FOR PAYMENT NO. 10** for the above referenced project. We have reviewed the application and to the best of our knowledge, information, and belief find that the amount requested appears to be reasonable and appropriate to the Work accomplished. Therefore, we recommend payment in the amount of **\$503,511.68**. Please make payment directly to the Construction Manager and enclose a copy of the application with their payment.

We have not made an independent examination of the Contractor's records nor verified whether subcontractors, persons, suppliers, vendors, or other entities with whom the Contractor may have agreements relative to this project have been paid and our recommendation does not constitute a representation that such accounts have, in fact, been paid. We have not inventoried any stored materials for which payment has been requested. We have relied entirely on the Contractor's representations made in the attached Application and Certificate for Payment and our observations of the Work as the basis for our recommendation.

Please do not hesitate to contact our office if you have any questions.

Sincerely,

A handwritten signature in black ink that reads 'Ginger Azpurua'.

Ginger Azpurua

Cc: Jarrod Adams, WCS Chief Operations Office
Jerry S. Boyd, WCS Superintendent
Todd Morris, BurWil Construction Co
Paul M. McCall, LGA



AIA Document G702™ – 1992

Invoice No. 13801

Application and Certificate for Payment

TO OWNER: Washington Co. Board of Education
 405 W. College Street
 Jonesborough, TN 37659

PROJECT: Washington Co Athletic Upgrade

APPLICATION NO: 10
PERIOD TO: 9/30/2024

Distribution to:

OWNER

FROM CONTRACTOR: Bur Wil Construction Company, Inc.

P. O. Box 637
 Bristol, TN 37621

ARCHITECT:

CONTRACT FOR:
CONTRACT DATE:
PROJECT NOS: 352-203-05

ARCHITECT
 CONTRACTOR
 FIELD
 OTHER

CONTRACTOR'S APPLICATION FOR PAYMENT

Application is made for payment, as shown below, in connection with the Contract.
 AIA Document G703™, Continuation Sheet, is attached.

1. ORIGINAL CONTRACT SUM \$ 8,287,000.00

2. NET CHANGE BY CHANGE ORDERS \$ 193,947.16

3. CONTRACT SUM TO DATE (Line 1 ± 2) \$ 8,480,947.16

4. TOTAL COMPLETED & STORED TO DATE (Column G on G703) \$ 8,480,947.16

5. RETAINAGE:

a. 5.0% of Completed Work

(Columns D + E on G703) \$ 424,047.36

b. % of Stored Material

(Column F on G703) \$

Total Retainage (Lines 5a + 5b, or Total in Column I of G703) \$ 424,047.36

6. TOTAL EARNED LESS RETAINAGE \$ 8,056,899.80

(Line 4 minus Line 5 Total)

7. LESS PREVIOUS CERTIFICATES FOR PAYMENT \$ 7,553,388.12

(Line 6 from prior Certificate)

8. CURRENT PAYMENT DUE \$ 503,511.68

9. BALANCE TO FINISH, INCLUDING RETAINAGE \$ 424,047.36

(Line 3 minus Line 6)

CHANGE ORDER SUMMARY	ADDITIONS	DEDUCTIONS
Total changes approved in previous months by Owner	\$	\$
Total approved this month	\$	\$
TOTAL	\$	\$
NET CHANGES by Change Order	\$	\$

The undersigned Contractor certifies that to the best of the Contractor's knowledge, information and belief the Work covered by this Application for Payment has been completed in accordance with the Contract Documents, that all amounts have been paid by the Contractor for Work for which previous Certificates for Payment were issued and payments received from the Owner, and that current payment shown herein is now due.

CONTRACTOR: Bur Wil Construction Company, Inc.

By: W. Williams Date: October 17, 2024

State of: Tennessee

County of: Sullivan

Subscribed and sworn to before

me this Seventeenth day of October, 2024

Notary Public: Jessie L. Humble

My commission expires: 10/25/2026

ARCHITECT'S CERTIFICATE FOR PAYMENT

In accordance with the Contract Documents, based on on-site observations and the data comprising this application, the Architect certifies to the Owner that to the best of the Architect's knowledge, information and belief the Work has progressed as indicated, the quality of the Work is in accordance with the Contract Documents, and the Contractor is entitled to payment of the AMOUNT CERTIFIED.

AMOUNT CERTIFIED \$ 503,511.68

(Attach explanation if amount certified differs from the amount applied. Initial all figures on this Application and on the Continuation Sheet that are changed to conform with the amount certified.)

ARCHITECT: Janice L. Humble

By: Janice L. Humble Date: 11/05/2024

This Certificate is not negotiable. The AMOUNT CERTIFIED is payable only to the Contractor named herein. Issuance, payment and acceptance of payment are without prejudice to any rights of the Owner or Contractor under this Contract.



CAUTION: You should sign an original AIA Contract Document, on which this text appears in RED. An original assures that changes will not be obscured.

AIA Document G702™ – 1992. Copyright © 1993, 1993, 1965, 1971, 1978, 1983 and 1992 by The American Institute of Architects. All rights reserved. **WARNING:** This AIA® Document is protected by U.S. Copyright Law and International Treaties. Unauthorized reproduction or distribution of this AIA® Document, or any portion of it, may result in severe civil and criminal penalties, and will be prosecuted to the maximum extent possible under the law. Purchasers are permitted to reproduce ten (10) copies of this document when completed. To report copyright violations of AIA Contract Documents, e-mail The American Institute of Architects' legal counsel, copyright@aia.org.



AIA®

Document G703™ – 1992

Continuation Sheet

AIA Document G702™-1992, Application and Certificate for Payment, or G732™-2009, Application and Certificate for Payment, Construction Manager as Adviser Edition, containing Contractor's signed certification is attached.
 In tabulations below, amounts are in US dollars.
 Use Column I on Contracts where variable retainage for line items may apply.

APPLICATION NO: 10
 APPLICATION DATE: 9/30/2024
 PERIOD TO: 9/30/2024
 ARCHITECT'S PROJECT NO: 352-203-05

A ITEM NO.	B DESCRIPTION OF WORK	C SCHEDULED VALUE	D WORK COMPLETED		E THIS PERIOD	F MATERIALS PRESENTLY STORED <i>(Not in D or E)</i>	G TOTAL COMPLETED AND STORED TO DATE <i>(D+E+F)</i>	H % <i>(G ÷ C)</i>	I BALANCE TO FINISH <i>(C - G)</i>	J RETAINAGE <i>(If variable rate)</i>
			FROM PREVIOUS APPLICATION <i>(D + E)</i>							
GENERAL REQUIREMENTS										
01-00	General Conditions	619,104.98	550,000.00		69,104.98		619,104.98	100.00		30,955.25
01-01	Building Permit	4,000.00	4,000.00				4,000.00	100.00		200.00
01-02	Payment & Performance Bond	56,650.00	56,650.00				56,650.00	100.00		2,832.50
01-03	Daniel Boone Testing Allowance	11,821.20	9,561.40		2,259.80		11,821.20	100.00		591.06
01-04	David Crockett Testing Allowance	11,723.30	10,000.00		1,723.30		11,723.30	100.00		586.17
01-05	Daniel Boone Contingency									
01-06	David Crockett Contingency									
01-07	DANIEL BOONE									
02-00	DB Selective Demolition	62,000.00	62,000.00				62,000.00	100.00		3,100.00
02-01	DB Site Grading/Site Utilities	325,483.50	319,183.50		6,300.00		325,483.50	100.00		16,274.18
02-02	DB Paving, Stripe&Prking Signage	21,323.40			21,323.40		21,323.40	100.00		1,066.17
02-03	DB Concrete Sidewalks/Steps	196,663.25	120,000.00		76,663.25		196,663.25	100.00		9,833.16
02-04	DB Fencing	57,548.43	8,000.00		49,548.43		57,548.43	100.00		2,877.42
02-05	DB Concrete	385,694.60	385,694.60				385,694.60	100.00		19,284.73
02-06	DB Masonry	294,227.27	294,227.27				294,227.27	100.00		14,711.36
02-07	DB Misc Steel	72,458.28	40,000.00		32,458.28		72,458.28	100.00		3,622.91
02-08	DB Steel Allowance	21,576.04	21,576.04				21,576.04	100.00		1,078.80
02-09	DB Rough Carpentry	21,000.00			21,000.00		21,000.00	100.00		1,050.00
02-10	DB Millwork	46,998.00	40,000.00		6,998.00		46,998.00	100.00		2,349.90
02-11	DB Roofing	12,400.00	4,000.00		8,400.00		12,400.00	100.00		620.00
02-12	DB Sealants & Caulking	43,328.00	39,000.00		4,328.00		43,328.00	100.00		2,166.40
02-13	DB Doors, Frames&Hardware	10,000.00	5,000.00		5,000.00		10,000.00	100.00		500.00
02-14	DB Coiling Counter Doors									
02-15	DB Coiling Counter Doors									
GRAND TOTAL										

CAUTION: You should sign an original AIA Contract Document, on which this text appears in RED. An original assures that changes will not be obscured.

AIA Document G703™ – 1992. Copyright © 1963, 1965, 1966, 1967, 1970, 1978, 1983 and 1992 by The American Institute of Architects. All rights reserved. **WARNING: This AIA® Document is protected by U.S. Copyright Law and International Treaties. Unauthorized reproduction or distribution of this AIA® Document, or any portion of it, may result in severe civil and criminal penalties, and will be prosecuted to the maximum extent possible under the law.** Purchasers are permitted to reproduce ten (10) copies of this document when completed. To report copyright violations of AIA Contract Documents, e-mail The American Institute of Architects' legal counsel, copyright@aia.org.



AIA[®] Document G703[™] – 1992

Continuation Sheet

AIA Document G702[™]-1992, Application and Certificate for Payment, or G732[™]-2009, Application and Certificate for Payment, Construction Manager as Adviser Edition, containing Contractor's signed certification is attached.
 In tabulations below, amounts are in US dollars.
 Use Column I on Contracts where variable retainage for line items may apply.

APPLICATION NO: 10
 APPLICATION DATE: 9/30/2024
 PERIOD TO: 9/30/2024
 ARCHITECT'S PROJECT NO: 352-203-05

A ITEM NO.	B DESCRIPTION OF WORK	C SCHEDULED VALUE	D WORK COMPLETED		E THIS PERIOD	F MATERIALS PRESENTLY STORED (Not in D or E)	G TOTAL COMPLETED AND STORED TO DATE (D+E+F)	H % (G ÷ C)	I BALANCE TO FINISH (C - G)	RETAINAGE (If variable rate)
			FROM PREVIOUS APPLICATION (D + E)							
02-16	DB Metal Studs/Drywall	1,234.00	1,234.00				1,234.00	100.00		61.70
02-17	DB Flooring	4,000.00	2,500.00		1,500.00		4,000.00	100.00		200.00
02-18	DB Painting	117,186.00	105,000.00		12,186.00		117,186.00	100.00		5,859.30
02-19	DB Toilet Partin, Accs&Fire Ex	42,567.80	20,000.00		22,567.80		42,567.80	100.00		2,128.39
02-20	DB Signage	46,000.00	33,000.00		13,000.00		46,000.00	100.00		2,300.00
02-21	DB Grandstands	1,216,520.00	1,216,520.00				1,216,520.00	100.00		60,826.00
02-22	DB Plumbing	240,000.00	205,000.00		35,000.00		240,000.00	100.00		12,000.00
02-23	DB HVAC	105,000.00	85,000.00		20,000.00		105,000.00	100.00		5,250.00
02-24	DB Electrical	679,345.05	609,000.00		70,345.05		679,345.05	100.00		33,967.25
03-00	DAVID CROCKETT									
03-01	DC Selective Demolition	50,500.00	50,500.00				50,500.00	100.00		2,525.00
03-02	DC Site Grading/Site Utilities	283,645.00	289,275.00		-5,630.00		283,645.00	100.00		14,182.25
03-03	DC Pvrng, Stripe&Prkng Signage	64,857.81	64,857.81				64,857.81	100.00		3,242.89
03-04	DC Concrete Sidewalks/Steps	61,055.00	38,930.00		22,125.00		61,055.00	100.00		3,052.75
03-05	DC Fencing	48,000.00	48,000.00				48,000.00	100.00		2,400.00
03-06	DC Concrete	249,193.50	249,193.50				249,193.50	100.00		12,459.67
03-07	DC Masonry	249,813.00	249,813.00				249,813.00	100.00		12,490.65
03-08	DC Misc Steel	47,511.00	20,000.00		27,511.00		47,511.00	100.00		2,375.55
03-09	DC Steel Allowance									
03-10	DC Rough Carpentry	33,634.32	33,634.32				33,634.32	100.00		1,681.72
03-11	DC Millwork	18,125.00	18,125.00				18,125.00	100.00		906.25
03-12	DC Roofing	48,286.00	48,286.00				48,286.00	100.00		2,414.30
03-13	DC Sealants & Caulking	12,600.00	6,300.00		6,300.00		12,600.00	100.00		630.00
03-14	DC Doors, Frames, & Hardware	44,188.50	44,188.50				44,188.50	100.00		2,209.43
	GRAND TOTAL									

CAUTION: You should sign an original AIA Contract Document, on which this text appears in RED. An original assures that changes will not be obscured.

AIA Document G703[™] – 1992. Copyright © 1963, 1965, 1966, 1967, 1970, 1978, 1983 and 1992 by The American Institute of Architects. All rights reserved. **WARNING:** This AIA[®] Document is protected by U.S. Copyright Law and International Treaties. Unauthorized reproduction or distribution of this AIA[®] Document, or any portion of it, may result in severe civil and criminal penalties, and will be prosecuted to the maximum extent possible under the law. Purchasers are permitted to reproduce ten (10) copies of this document when completed. To report copyright violations of AIA Contract Documents, e-mail The American Institute of Architects' legal counsel, copyrigh@aia.org.



AIA[®] Document G703[™] -- 1992

Continuation Sheet

AIA Document G702[™]-1992, Application and Certificate for Payment, or G732[™]-2009, Application and Certificate for Payment, Construction Manager as Adviser Edition, containing Contractor's signed certification is attached.
 In tabulations below, amounts are in US dollars.
 Use Column I on Contracts where variable retainage for line items may apply.

APPLICATION NO: 10
 APPLICATION DATE: 9/30/2024
 PERIOD TO: 9/30/2024
 ARCHITECT'S PROJECT NO: 352-203-05

A ITEM NO.	B DESCRIPTION OF WORK	C SCHEDULED VALUE	D WORK COMPLETED		E THIS PERIOD	F MATERIALS PRESENTLY STORED <i>(Not in D or E)</i>	G TOTAL COMPLETED AND STORED TO DATE <i>(D+E+F)</i>	H BALANCE TO FINISH <i>(C-G)</i>	I RETAINAGE <i>(If variable rate)</i>
			FROM PREVIOUS APPLICATION <i>(D + E)</i>						
03-15	DC Coiling Counter Doors	10,000.00	10,000.00				10,000.00	100.00	500.00
03-16	DC Metal Studs/Drywall	2,041.00	2,041.00				2,041.00	100.00	102.05
03-17	DC Flooring	4,000.00	4,000.00				4,000.00	100.00	200.00
03-18	DC Painting	120,458.00	120,458.00				120,458.00	100.00	6,022.90
03-19	DC Toilet Partin, Accs&Fire Ex	42,814.93	42,814.93				42,814.93	100.00	2,140.75
03-20	DC Signage	43,000.00	43,000.00				43,000.00	100.00	2,150.00
03-21	DC Grandstands	1,215,990.00	1,215,990.00				1,215,990.00	100.00	60,799.50
03-22	DC Plumbing	250,000.00	250,000.00				250,000.00	100.00	12,500.00
03-23	DC HVAC	105,000.00	105,000.00				105,000.00	100.00	5,250.00
03-24	DC Electrical	750,381.00	750,381.00				750,381.00	100.00	37,519.05
	GRAND TOTAL	8,480,947.16	7,950,934.87		530,012.29		8,480,947.16	100.00	424,047.36

CAUTION: You should sign an original AIA Contract Document, on which this text appears in RED. An original assures that changes will not be obscured.

AIA Document G703[™] -- 1992. Copyright © 1963, 1965, 1966, 1967, 1970, 1978, 1983 and 1992 by The American Institute of Architects. All rights reserved. **WARNING: This AIA[®] Document is protected by U.S. Copyright Law and International Treaties. Unauthorized reproduction or distribution of this AIA[®] Document, or any portion of it, may result in severe civil and criminal penalties, and will be prosecuted to the maximum extent possible under the law.** Purchasers are permitted to reproduce ten (10) copies of this document when completed. To report copyright violations of AIA Contract Documents, e-mail The American Institute of Architects' legal counsel, copyright@aia.org.



AIA® Document G701® – 2017

Change Order

PROJECT: *(Name and address)*
Washington County Schools: Athletic
Upgrades

CONTRACT INFORMATION:
Contract For: General Construction

Date: 11/27/2023

CHANGE ORDER INFORMATION:
Change Order Number: 004

Date: 09/24/2024

OWNER: *(Name and address)*
Washington County Schools
405 W College St
Jonesborough, TN 37659

ARCHITECT: *(Name and address)*
The Lewis Group Architects, Inc.
6512 Deane Hill Dr
Knoxville, TN 37919

CONTRACTOR: *(Name and address)*
BurWil Construction Company, Inc.
1545 Western Ave, Suite 208
Knoxville, TN 37921

THE CONTRACT IS CHANGED AS FOLLOWS:

(Insert a detailed description of the change and, if applicable, attach or reference specific exhibits. Also include agreed upon adjustments attributable to executed Construction Change Directives.)

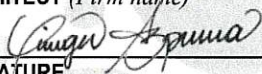
PCCO #004 + (\$7,225.18)
Refer to attached exhibit.

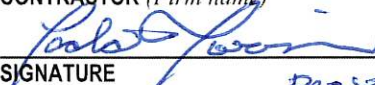
The original Contract Sum was	\$ 8,287,000.00
The net change by previously authorized Change Orders	\$ 186,721.98
The Contract Sum prior to this Change Order was	\$ 8,473,721.98
The Contract Sum will be increased by this Change Order in the amount of	\$ 7,225.18
The new Contract Sum including this Change Order will be	\$ 8,480,947.16

The Contract Time will be unchanged by Zero (0) days.
The new date of Substantial Completion will be 260 Calendar Days

NOTE: This Change Order does not include adjustments to the Contract Sum or Guaranteed Maximum Price, or the Contract Time, that have been authorized by Construction Change Directive until the cost and time have been agreed upon by both the Owner and Contractor, in which case a Change Order is executed to supersede the Construction Change Directive.

NOT VALID UNTIL SIGNED BY THE ARCHITECT, CONTRACTOR AND OWNER.

The Lewis Group Architects, Inc
ARCHITECT *(Firm name)*

SIGNATURE
Ginger Azpurua - Project Coordinator
PRINTED NAME AND TITLE
09/26/2024
DATE

BurWil Constuction Company, Inc.
CONTRACTOR *(Firm name)*

SIGNATURE
Todd Morris - Project Manager
PRINTED NAME AND TITLE
9/26/24
DATE

Washington County Schools
OWNER *(Firm name)*

SIGNATURE

PRINTED NAME AND TITLE

DATE

BurWil Construction Company, Inc.
 1545 Western Ave, Suite 208
 Knoxville, Tennessee 37921
 Phone: (865) 409-4825
 Fax: (865) 409-4835

Project: 352-203-05 - Washington Co Athletic Upgrades
 684 Old State Route 34
 Jonesborough, Tennessee 37659

Prime Contract Change Order #004: PCO's 21-26

TO:		FROM:	
DATE CREATED:	9/24/2024	CREATED BY:	Todd Morris (BurWil Construction Company, Inc.)
CONTRACT STATUS:	Pending - In Review	REVISION:	0
DESIGNATED REVIEWER:		REVIEWED BY:	
DUE DATE:		REVIEW DATE:	
INVOICED DATE:		PAID DATE:	
SCHEDULE IMPACT:		EXECUTED:	No
REVISED SUBSTANTIAL COMPLETION DATE:		SIGNED CHANGE ORDER RECEIVED DATE:	
CONTRACT FOR:	352-203-05:Washington Co Athletic Upgrade	TOTAL AMOUNT:	\$7,225.18
DESCRIPTION:			
ATTACHMENTS:			

POTENTIAL CHANGE ORDERS IN THIS CHANGE ORDER:

PCO #	Title	Schedule Impact	Amount
21	CE #032 - Site Utility Changes		(\$5,630.00)
22	CE #034 - Testing Allowance 7-		\$728.30
24	CE #041 - Site Revisions		(\$18,434.00)
25	CE #043 - Boone Fence Modification		\$25,672.19
26	CE #046 - New Fence Gate @ Boo		\$1,526.25
27	CE #048 - Testing Allowance		\$3,362.44
Total:			\$7,225.18

CHANGE ORDER LINE ITEMS:

PCO # 21: CE #032 - Site Utility Changes

#	Budget Code	Description	Amount
1	18-02300-01.SUB Earthwork.Subcontract	Deduct Manhole	\$(9,300.00)
2	18-02300-01.SUB Earthwork.Subcontract	Pipe Through Exst RCP	\$3,670.00
Grand Total:			\$(5,630.00)

PCO # 22: CE #034 - Testing Allowance 7-

#	Budget Code	Description	Amount
1	1-01400-27.ODC David Crockett Testing.Other Direct Cost	Crockett Testing Allowance	\$633.30
G&A (10.00% Applies to all line item types.):			\$63.33
Contractor's Fee (5.00% Applies to all line item types.):			\$31.67
Grand Total:			\$728.30

PCO # 24: CE #041 - Site Revisions

#	Budget Code	Description	Amount
1	2-02775-01.SUB Sidewalks & Steps.Subcontract	Boone Sidewalk	\$(21,180.00)

#	Budget Code	Description	Amount
2	2-02700-01.SUB Asphalt Paving.Subcontract	Asphalt Deducts	\$(24,000.00)
3	5-05100-26.ODC Boone Steel Allowance.Other Direct Cost	Steel Allowance	\$(10,000.00)
4	18-05100-26.ODC Crockett Steel Allowance.Other Direct Cost	Steel Allowance	\$(10,000.00)
5	2-02300-01.SUB Earthwork.Subcontract	Asphalt Demo	\$6,300.00
6	18-02775-01.SUB Sidewalks.Subcontract	Crockett Sidewalk	\$22,125.00
7	18-05100-02.MAT Structural & Misc. Steel.Materials	Crockett Handrails	\$18,321.00
Grand Total:			\$(18,434.00)

PCO # 25: CE #043 - Boone Fence Modification

#	Budget Code	Description	Amount
1	2-02820-01.SUB Fences & Gates.Subcontract		\$22,227.00
G&A (10.00% Applies to all line item types.):			\$2,222.70
Contractor's Fee (5.00% Applies to all line item types.):			\$1,222.49
Grand Total:			\$25,672.19

PCO # 26: CE #046 - New Fence Gate @ Boo

#	Budget Code	Description	Amount
1	2-02820-01.SUB Fences & Gates.Subcontract		\$1,321.43
G&A (10.00% Applies to all line item types.):			\$132.14
Contractor's Fee (5.00% Applies to all line item types.):			\$72.68
Grand Total:			\$1,526.25

PCO # 27: CE #048 - Testing Allowance

#	Budget Code	Description	Amount
1	1-01400-26.ODC Daniel Boone Testing.Other Direct Cost	Deduct Remaining Allowance	\$(438.60)
2	1-01400-26.ODC Daniel Boone Testing.Other Direct Cost	August Boone Invoice	\$330.00
3	1-01400-26.ODC Daniel Boone Testing.Other Direct Cost	September Boone Invoice	\$1,929.80
4	1-01400-27.ODC David Crockett Testing.Other Direct Cost	August Crockett Invoice	\$1,090.00
G&A (10.00% Applies to all line item types.):			\$291.12
Contractor's Fee (5.00% Applies to all line item types.):			\$160.12
Grand Total:			\$3,362.44

The original (Contract Sum)	\$8,287,000.00
Net change by previously authorized Change Orders	\$186,721.98
The contract sum prior to this Change Order was	\$8,473,721.98
The contract sum would be changed by this Change Order in the amount of	\$7,225.18
The new contract sum including this Change Order will be	\$8,480,947.16
The contract time will not be changed by this Change Order.	

SIGNATURE

DATE

SIGNATURE

DATE

SIGNATURE

DATE



9-25-24



PRICE INQUIRY FORM

VENDOR	DESCRIPTION OF ITEM FOR PRICE COMPARISON	PRICE QUOTED
Firm <u>McCall Fencing</u> Address _____ _____ Person Contacted _____ _____ Date _____	Fall Branch Fencing South Central Fencing Gray Elementary	\$ 3,795 ⁴⁴ \$19,302 ⁰⁰ \$9,000 \$32,097⁴⁴
Firm <u>Tri-City Fence</u> Address _____ _____ Person Contacted _____ _____ Date _____	Fall Branch Fencing South Central Fencing Gray Elem. Fencing	\$ 2,850 ⁰⁰ \$10,900 ⁰⁰ \$ 6800 ⁰⁰ \$20,550
Firm <u>Rio Grande Fence</u> Address _____ _____ Person Contacted _____ _____ Date _____	No Quote Given	

Name of person obtaining inquiry Logan Clark

Kingsport, TN 37663

Estimate

Phone # 423-323-8197

10/3/2024

Fax # 423-323-8704



18307

Contract Submitted To:	ATTN:	
WA County Schools Jeremy Moore 1300 Suncrest Dr Gray, Tn, 37615	E-mail:	
	Job Name	
	Location	

Description	Total
Install Standard Duty Paving over Approx. 18,986 Sqft. 6" Compacted Base Stone 3" Compacted Binder Mix 2" Compacted Surface Mix	226,521.00
400 LF of Extruded Curb.	6,720.00
** No other milling, hauling, utility relocation, digging, striping, or materials included. ** Only one mobilization per phase included. Additional will require a change order. ** No permits or testing included.	

Asphalt Clause: Pricing quoted herein is based on Liquid Asphalt Index Pricing from our supplier for the date of quote. per liquid ton. Due to volatility in oil markets, pricing is subject to change, and will be adjusted at time of placement.

Exclusions/Disclaimers:

- As a standard anything not specifically listed above or addressed in this section shall be considered excluded regardless of plan specs Including "Incidentals".
- Testing, Permits, Fees, Bonds, Demolition, Heavy Grading Layout, ThermoPlastic, Manhole and/or Grating Adjustments, Staking Layout are excluded from this quote
- Traffic control; anything beyond two (2) flagmen is excluded
- No Signage is included in this quote unless specifically stated above
- Rock Clause (will be additional charge if there is rock to be removed)
- Sub-Grade to be within +/- 0.1 of required grade

We propose to furnish labor, equipment, and materials to complete work listed in a professional, workmanlike manner according to standard industry practices. Payment is due at time of service. Accounts not paid within 30 days are subject to an 18% monthly finance charge. Should legal proceedings become necessary to collect payment, customer is responsible for court costs and our attorney fees.

Thank you for the opportunity to earn your business!

Authorized Signature: _____

Terms

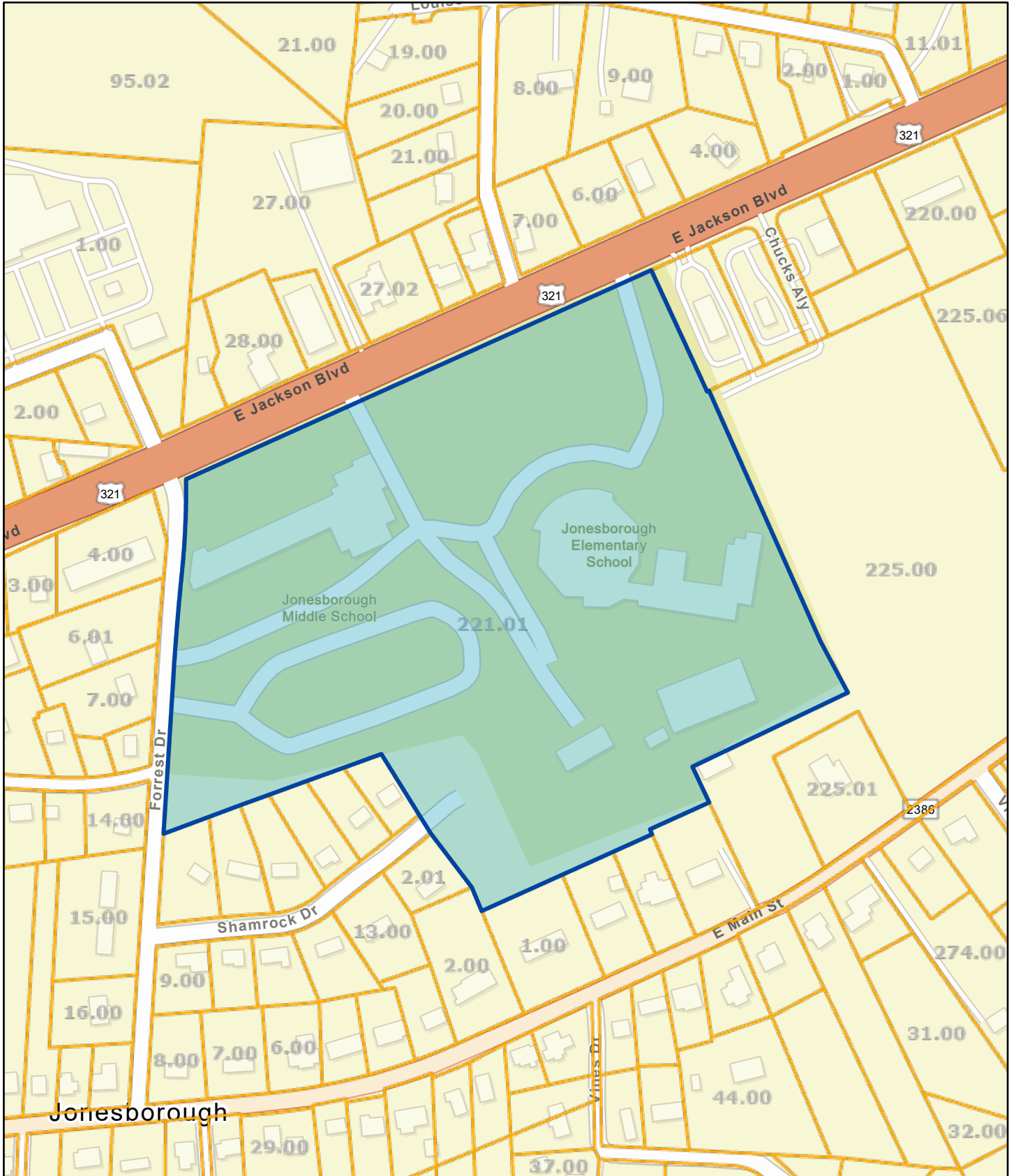
Total \$233241.00

I/We hereby accept the terms set forth in this quote and authorize BRACKEN PAVING, to perform the aforementioned work.

Sale Information

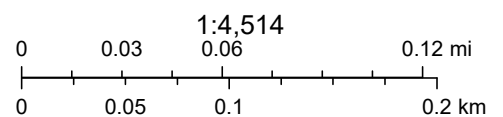
Sale Date	Price	Book	Page	Vacant/Improved	Type Instrument	Qualification
1/24/1961	\$0	340	88		-	-
11/6/1959	\$0	336	378		-	-
12/5/1949	\$0	253	74		-	-

Washington County - Parcel: 052 221.01



Date: August 27, 2024

County: Washington
Owner: JONESBOROUGH MIDDLE SCHOOL
Address: JACKSON BLVD E
Parcel Number: 052 221.01
Deeded Acreage: 31
Calculated Acreage: 0
Date of TDOT Imagery: 2023
Date of Vexcel Imagery: 2023



State of Tennessee, Comptroller of the Treasury, Division of Property Assessments (DPA), Esri Community Maps Contributors, City of Johnson City, TN, State of North Carolina DOT, Tennessee STS GIS, © OpenStreetMap, Microsoft, Esri, TomTom, Garmin, SafeGraph, GeoTechnologies, Inc, METI/NASA, USGS, EPA, NPS, US Census Bureau,

The property lines are compiled from information maintained by your local county Assessor's office but are not conclusive evidence of property ownership in any court of law.



Tennessee Property Viewer





Tennessee Property Viewer





Tennessee Property Viewer





Tennessee Property Viewer

