

**WASHINGTON COUNTY
BOARD OF EDUCATION**

October 22, 2024

5:00 PM

Central Office

- I. Call to Order**
- II. Academics**
 - A. Overnight/Out of State Field Trips**
- III. Business / Finance**
 - A. Monthly Financials**
 - B. Purchase Orders**
 - C. Request To Send Items Out For Bid**
- IV. Operations**
 - A. Capital Projects Updates**
 - B. DBHS Heating and Cooling System Estimate**
 - C. Operations-PCO-DBHS Abatement**
 - D. Demo existing house on DBHS property**
 - E. BCE Track estimate**
 - F. Fencing Proposals**
 - G. DCHS Softball Bleacher Quote**
 - H. School Nutrition -- Request for Payment of Expenses for adult meals served during disaster relief effort**
- V. Student Supports**
- VI. Superintendent**
 - A. Request from Washington County EMS -- Lamar Property**
 - B. Policy Review**
 - 1. Policy 1.8011: Emergency Closings**
 - C. Request from Gideons International -- Washington County Camp**
 - D. Athletic Coach and Activity Sponsor Supplements**

ISTRIC INFORMATION

| | | |
|---|---------------|---------------------------|
| District Name | | Washington County Schools |
| Director of Schools Name | | Mr. Jerry Boyd |
| District Point of Contact for TISA Accountability Report | Name | Ms. Cindy Hayes |
| | Phone Number | 423-753-1100 |
| | Email Address | hayesc@wcde.org |
| Percent of 3 rd grade students who scored proficient (“met expectations” or “exceeded expectations”) on the English Language Arts (ELA) portion of the most recent spring TCAP | | 52.1% |

DISTRICT GOAL STATEMENT(S)

| | |
|--|---|
| Goal Statement 1: 3 rd Grade ELA Proficiency ¹ | 70 % of students will score proficient on the 3 rd grade ELA TCAP by year 2030 |
| Goal Statement 2: | Improve Math Achievement for All students 70% or more students will meet or exceed expectations on 3-8 TCAP and High School EOC tests in Math by 2030. |
| Goal Statement 3: | Future Ready Students – Ready Graduate 70% of Washington County School graduates will meet the Ready Graduate Indicator by 2030 |
| Goal Statement 4: | |
| Goal Statement 5: | |

¹ **Note:** This is a required goal pursuant to T.C.A. § 49-3-112 and must include 70% or more of 3rd grade students proficient on the ELA TCAP. If your district already has 70% or more of 3rd grade students proficient in ELA, please state a goal that either maintains or increases that proficiency rate.

Goal Statement 1 (3rd grade ELA proficiency):

| Year | Annual Outcome Target(s) | Associated Metrics/Data |
|---|---|--|
| <p>Year 1: 2023-2024 school year (Actual Data)</p> | <p>3rd Grade Literacy</p> <p>All Students who met or exceeded expectations in Grade 3 ELA 52.1%</p> <p>BHN students who met or exceeded expectations in Grade 3 ELA 52.8%</p> <p>ED students who met or exceeded expectations in Grade 3 ELA 41.8%</p> <p>SWD who met or exceeded expectations in Grade 3 ELA 22.2%</p> | <p>Year 1: 2024 Grade 3 TCAP Scores for District-Wide Literacy in ACHIEVEMENT. Increase proficiency by 3 points.</p> <p>Fall 2023 Students who are lower than the 40th percentile (composite) on the Fall Universal AIMSWEBPLUS screener and not being served in RTI will be recommended for high-dosage, low-ration tutoring.</p> <p>Spring 2024 Students who are lower than the 40th percentile (composite) on the Spring Universal AIMSWEBPLUS screener will be recommended to attend Summer</p> <p>*****</p> <p>Year 2: 2025 Grade 3 TCAP Scores for District-Wide Literacy in ACHIEVEMENT. Increase proficiency by 3 points.</p> <p>TCAP scores and Universal screeners will be consistently utilized to assess student growth and achievement, guiding instruction and support. BHN students who increased 7.3% of Year 1 goal will be closely monitored through CASE Benchmark data to ensure continued success in both achievement and growth.</p> |
| <p>Year 2: 2024-2025 school year</p> | <p>3rd Grade Literacy</p> <p>Increase the percent of All students who met or exceeded expectations in grade 3 ELA from 52.1% to 55.7%</p> <p>Increase the percent of BHN students who met or exceeded expectations in grade 3 ELA from 52.8% to 57.2%</p> <p>Increase the percent of ED students who met or exceeded expectations in grade 3 ELA from 41.8% to 47.1%</p> <p>Increase the percent of SWD students who met or exceeded expectations in grade 3 ELA from 22.2% to 35.8%</p> | <p>Fall 2024 Students who are lower than the 40th percentile (composite) on the Fall Universal AIMSWEBPLUS screener and not being served in RTI will be recommended for high-dosage, low-ration tutoring.</p> <p>Spring 2025 Students who are lower than the 40th percentile (composite) on the Spring Universal AIMSWEBPLUS screener will be recommended to attend Summer</p> |

Goal Statement 1 (3rd grade ELA proficiency):

| | | |
|---|--|--|
| | | |
| <p>Year 3: 2025-2026 school year</p> | <p><u>3rd Grade Literacy</u></p> <p>Increase the percent of All students who met or exceeded expectations in grade 3 ELA from 55.7% to 58.7%</p> <p>Increase the percent of BHN students who met or exceeded expectations in grade 3 ELA from 57.2% to 61.6%</p> <p>Increase the percent of ED students who met or exceeded expectations in grade 3 ELA from 47.1% to 51.6%</p> <p>Increase the percent of SWD students who met or exceeded expectations in grade 3 ELA from 35.8% to 43%</p> | |

Goal Statement 1 (3rd grade ELA proficiency):

| | | |
|--|---|--|
| Year 4: 2026-2027 school year | | |
| Year 5: 2027-2028 school year | | |
| Reflection: Did your district meet its Year 1 outcomes target(s)? How will this impact your action plan for the coming years? | <p>Washington County's 3rd-grade literacy goal aimed for 52.7% of All students to meet or exceed expectations. We experienced a slight decrease of less than 1% in our All and ED Student Groups. Notably, our Black, Hispanic, and Native American (BHN) subgroup showed a significant <u>increase</u> of 7.3%, while our Students with Disabilities (SWD) subgroup saw a <u>decline</u> of 6.4%.</p> <p>After reviewing this data, the district will focus on supporting teachers with targeted training to ensure that High-Quality Instructional Materials (HQIM) and effective teaching strategies are used consistently and with fidelity at the grade level. A key concern is that progress for All Students has plateaued, indicating the need to "move the needle" on overall improvement. Additionally, we recognize that more targeted support is required for our ED and SWD subgroups to ensure equitable access to curriculum and instruction, addressing gaps in achievement. To sustain the significant first year goal increase by 7.3% with our Black, Hispanic, and Native-American (BHN) subgroup we will continue to monitor and adjust assessment data to ensure that instruction with high-quality strategies are continuing to be used to reach this population.</p> | |

Goal Statement 1 (3rd grade ELA proficiency):

Prior Year Report: What were the 2-3 major TISA investments you made in the prior year toward this goal? For each, please note the amount expended (rough estimate) and reflections on whether or not the investment contributed to progressing toward the goal or not, and how so.

Improving Teacher Salaries is a major investment. Hiring and retaining quality teachers impacts the outcomes of all of our goals. Including the total amount of the FY24 and FY25 raises, along with projected future salary increases will all be via TISA

Action Plan: List detailed action steps or strategies for the 2024-2025 school year to meet your annual target.

Action Step 1:
HQIM Implementation
Provide support and align professional development to all ELA teachers. Consistent unit and lesson prep implementation of ELA HQIM K-12.

Action Step 2:
High- Quality Assessments
Universal Screener (AIMSWEBPLUS) will be administered to K-8 students 3 times a year and a benchmark assessment (CASE) will be administered at the end of each 9 week period.

Action Step 3:
Tutoring/Interventions
High dosage, low ratio tutoring for at-risk or retained 3rd grade students.
Staffing of part-time tutors at designated schools with high-risk populations.
Focus with our high-risk populations to ensure high-quality instructional strategies are utilized to meet the needs of our sub-groups especially with our ED and SWD populations.

Goal Statement 1 (3rd grade ELA proficiency):

| | |
|--|---|
| | <p>High-quality RTI2 program for all students.</p> <p>Action Step 4: Summer Programs</p> <p>Summer Programs offered to all students with an emphasis on at-risk students especially with our sub-groups ED and SWD.</p> |
| <p>Budget Narrative: Describe how your district intends to use their budget to execute the action steps and meet the stated goal.</p> | <ol style="list-style-type: none">1. HQIM Implementation: Literacy Implementation Networking (LIN) Grant funding will be used to support effective implementation of high-quality literacy curriculum, Benchmark Advance, through the partnership with TNTP.2. High – Quality Assessments - Required Universal Screener (AIMSWEBPLUS) is currently funded through general funds.3. High – Quality Assessments - Benchmark Assessment (CASE) was funded through ESSER, starting school-year 24-25 TISA funds will be utilized to support this funding.4. Tutoring/Interventions - High dosage, low ratio tutoring programs was funded through federal funds, school year 2024-2025 will be funded through local funds and local partnership program-Niswonger Foundation.5. Summer Programs will be funded through state and local funds. |

Goal Statement 1 (3rd grade ELA proficiency):

| | |
|--|--|
| | |
|--|--|

DRAFT

Goal Statement 2: Improve Math Achievement for All Students 70% or more students will meet or exceed expectations on 3-8 TCAP and High School EOC test in Math by year 2030

| Year | Annual Outcome Target(s) | Associated Metrics/Data |
|---|--|---|
| <p>Year 1: 2023-2024 school year (Actual Data)</p> | <p><u>Math Grades 3 - 5</u></p> <p>All Students who met or exceeded expectations in Grades 3-5 Math 44.5%</p> <p>BHN students who met or exceeded expectations in Grade 3-5 Math 36.8%</p> <p>ED students who met or exceeded expectations in Grade 3-5 Math 30.3%</p> <p>SWD who met or exceeded expectations in Grade 3-5 Math 14.2%</p> <p><u>Math Grades 6 - 8</u></p> <p>All Students who met or exceeded expectations in Grades 6-8 Math 47.1%</p> <p>BHN students who met or exceeded expectations in Grade 6-8 Math 36.4%</p> <p>ED students who met or exceeded expectations in Grade 6-8 Math 31.6%</p> <p>SWD who met or exceeded expectations in Grade 6-8 Math 12.1%</p> <p><u>Math Grades 9-12</u></p> <p>Percent of All students who met or exceeded expectations in grades 9-12 math 35.7%</p> | <p>2024 Grades 3-8 TCAP Scores for District-Wide Numeracy in ACHIEVEMENT. Increase proficiency by 3.9 points.</p> <p>Fall 2023 Students who are lower than the 40th percentile (composite) on the Fall Universal AIMSWEBPLUS screener and not being served in RTI will be recommended for high-dosage, low-ration tutoring.</p> <p>Spring 2024 Students who are lower than the 40th percentile (composite) on the Spring Universal AIMSWEBPLUS screener will be recommended to attend Summer Programs (2024)</p> <p>2024 SY Algebra I EOC Scores for District in ACHIEVEMENT.</p> <p>2024 SY Algebra II EOC Scores for District in ACHIEVEMENT.</p> <p>2024 SY GEOMETRY EOC Scores for District in ACHIEVEMENT.</p> <p>*****</p> <p>YEAR 2: 2024 District-Wide Numeracy</p> <p>TCAP scores, EOCs, Universal screeners will be consistently utilized to assess student growth and achievement, guiding instruction and support.</p> <p>Students in grades 3-8 will be closely monitored using CASE Benchmark data to address gaps in proficiency and ensure progress toward meeting or exceeding the previous year's goals. This will help align instruction with standards, maintain high expectations, and promote the use of high-quality instructional materials.</p> <p>EOC Year 1 goals were met, future goals will be updated and adjusted to demonstrate increased targets moving forward. We will continue to provide support to our teachers and students with implementation of HQIM. Additionally, this school year we will implement focused and targeted instructional support in grades 9-12 to increase the capacity of our math educators, specifically around Core Action 2 in the TDOE Math IPG.</p> <p>2025 Grades 3-8 TCAP Scores for District-Wide Numeracy in ACHIEVEMENT. Increase proficiency by 3.9 points.</p> |

Goal Statement 2: Improve Math Achievement for All Students 70% or more students will meet or exceed expectations on 3-8 TCAP and High School EOC test in Math by year 2030

| | | |
|---|--|---|
| | <p>Percent of BHN students who met or exceeded expectations in grades 9-12 math 27.6%</p> <p>Percent of ED students who met or exceeded expectations in grades 9-12 math 19.2%</p> <p>Percent of SWD students who met or exceeded expectations in grades 9-12 math 6.8%</p> | <p>Fall 2024 Students who are lower than the 40th percentile (composite) on the Fall Universal AIMSWEBPLUS screener and not being served in RTI will be recommended for high-dosage, low-ratio tutoring.</p> <p>Spring 2025 Students who are lower than the 40th percentile (composite) on the Spring Universal AIMSWEBPLUS screener will be recommended to attend Summer Programs (2024)</p> <p>2025 SY Algebra I EOC Scores for District in ACHIEVEMENT.</p> <p>2025 SY Algebra II EOC Scores for District in ACHIEVEMENT.</p> <p>2025 SY GEOMETRY EOC Scores for District in ACHIEVEMENT.</p> |
| <p>Year 2: 2024-2025 school year</p> | <p><u>Math Grades 3-5</u></p> <p>Increase the percent of All students who met or exceeded expectations in grades 3-5 numeracy from 44.5% to 50.1%</p> <p>Increase the percent of BHN who met or exceeded expectations in grades 3-5 numeracy from 36.8% to 43.2%</p> <p>Increase the percent of ED students who met or exceeded expectations in grades 3-5 numeracy from 30.3% to 36.9%</p> <p>Increase the percent of SWD students who met or exceeded expectations in grades 3-5 numeracy from 14.2% to 25.6%</p> | |

Goal Statement 2: Improve Math Achievement for All Students 70% or more students will meet or exceed expectations on 3-8 TCAP and High School EOC test in Math by year 2030

Math Grades 6-8

Increase the percent of **All** students who met or exceeded expectations in grades 6-8 Math from 47.1% to 49.9%.

Increase the percent of **BHN** students who met or exceeded expectations in grades 6-8 Math from 36.4% to 41.9%.

Increase the percent of **ED** students who met or exceeded expectations in grades 6-8 Math from 31.6% to 33.6%

Increase the percent of **SWD** students who met or exceeded expectations in grades 6-8 Math from 12.1% to 24.2%.

Grades 9-12

Increase the percent of **All** students who met or exceeded expectations in grades 9-12 math from 28.8% to 30.8%.

Increase the percent of **BHN** students who met or exceeded expectations in grades 9-12 math from 25.3% to 27.3%.

Increase the percent of **ED** students who met or exceeded expectations in grades 9-12 math from 14.6% to 16.6%.

Increase the percent of **SWD** students who met or exceeded

Goal Statement 2: Improve Math Achievement for All Students 70% or more students will meet or exceed expectations on 3-8 TCAP and High School EOC test in Math by year 2030

| | | |
|---|--|--|
| | <p>expectations in grades 9-12 math from 3.5% to 6.5%.</p> | |
| <p>Year 3: 2025-2026 school year</p> | <p><u>Math Grades 3-5</u></p> <p>Increase the percent of All students who met or exceeded expectations in grades 3-5 Math from 50.1% to 55.7%.</p> <p>Increase the percent of BHN who met or exceeded expectations in grades 3-5 numeracy from 43.2% to 49.6%</p> <p>Increase the percent of ED students who met or exceeded expectations in grades 3-5 numeracy from 36.9% to 43.5%</p> <p>Increase the percent of SWD students who met or exceeded expectations in grades 3-5 numeracy from 25.6% to 37%</p> <p><u>Math Grades 6-8</u></p> <p>Increase the percent of All students who met or exceeded expectations in grades 6-8 Math from 49.9% to 50.9%.</p> <p>Increase the percent of BHN students who met or exceeded</p> | |

Goal Statement 2: Improve Math Achievement for All Students 70% or more students will meet or exceed expectations on 3-8 TCAP and High School EOC test in Math by year 2030

expectations in grades 6-8 Math from 41.9% 43.9%.

Increase the percent of **ED** students who met or exceeded expectations in grades 6-8 Math from 33.6% to 35.6%.

Increase the percent of **SWD** students who met or exceeded expectations in grades 6-8 Math from 24.2% to 36.2%.

Grades 9-12

Increase the percent of **All** students who met or exceeded expectations in grades 9-12 math from 30.8% to 32.8%.

Increase the percent of **BHN** students who met or exceeded expectations in grades 9-12 math from 27.3% to 29.3%.

Increase the percent of **ED** students who met or exceeded expectations in grades 9-12 math from 16.6% to 18.6%.

Increase the percent of **SWD** students who met or exceeded expectations in grades 9-12 math from 6.5% to 8.5%.

Goal Statement 2: Improve Math Achievement for All Students 70% or more students will meet or exceed expectations on 3-8 TCAP and High School EOC test in Math by year 2030

| | | |
|---|--|---|
| | | |
| <p>Year 4: 2026-2027 school year</p> | | |
| <p>Year 5: 2027-2028 school year</p> | | |
| <p>Reflection: Did your district meet its Year 1 outcomes target(s)? How will this impact your action plan for the coming years?</p> | | <p>The overall achievement scores for Year 1 in Grades 3-8 remained consistent with previous years. We are committed to continued growth with our educators, particularly with the implementation of a new math curriculum. Additionally, we will focus on providing unit and lesson preparation to ensure high-quality instruction that meets the needs of all student subgroups. Our action plan will continue throughout the years to support increased achievement proficiency percentages among all subgroups.</p> <p>Washington County Schools met all Year 1 targets for 9-12 math. Specifically, targets exceeding our stated Year 1 goals in the following areas: All students exceeded the Year 1 target of 28.8% of students meeting or exceeding expectations with an average of 35.7%. BHN students exceeded the Year 1 target of 25.3% of students meeting or exceeding expectations with an average of 27.6%. ED students exceeded the Year 1 target of 14.6% of students meeting or exceeding expectations with an average of 19.2%. SWD students exceeded the Year 1 target of 3.5% of students meeting or exceeding expectations with an average of 6.8%.</p> <p>Because Washington County Schools exceeded our Year 1 goals, future goals will be updated and adjusted to demonstrate increased targets moving forward. We will continue to provide support to our teachers and students with implementation of HQIM. Additionally, this school year we will implement focused and targeted instructional support in grades 9-12 to increase the capacity of our math educators, specifically around Core Action 2 in the TDOE Math IPG.</p> |

Goal Statement 2: Improve Math Achievement for All Students 70% or more students will meet or exceed expectations on 3-8 TCAP and High School EOC test in Math by year 2030

| | |
|---|--|
| <p>Prior Year Report: What were the 2-3 major TISA investments you made in the prior year toward this goal? For each, please note the amount expended (rough estimate) and reflections on whether or not the investment contributed to progressing toward the goal or not, and how so.</p> | <p>Improving Teacher Salaries is a major investment. Hiring and retaining quality teachers impacts the outcomes of all of our goals. Including the total amount of the FY24 and FY25 raises, along with projected future salary increases will all be via TISA</p> |
| <p>Action Plan: List detailed action steps or strategies for the 2024-2025 school year to meet your annual target.</p> | <p>Action Step 1: HQIM Implementation Provide support and align professional development to all math teachers. Consistent unit and lesson prep implementation of Math HQIM K-12.</p> <p>Action Step 2: High- Quality Assessments Universal Screener (AIMSWEBPLUS) will be administered to K-8 students 3 times a year and a benchmark assessment (CASE) will be administered at the end of each 9 week period.</p> <p>Action Step 3: Tutoring/Interventions High dosage, low ratio tutoring for at-risk or retained students. Staffing of part-time tutors at designated schools with high-risk populations. High-quality RTI2 program for all students.</p> <p>Action Step 4: Summer Programs Summer Programs offered to all students with an emphasis on at-risk students.</p> |

Goal Statement 2: Improve Math Achievement for All Students 70% or more students will meet or exceed expectations on 3-8 TCAP and High School EOC test in Math by year 2030

| | |
|--|---|
| <p>Budget Narrative: Describe how your district intends to use their budget to execute the action steps and meet the stated goal.</p> | <p>HQIM Implementation: NIET Grant funding will be used to support effective implementation of high-quality literacy curriculum, SAVAAS Envision (K-8) and Big Ideas (AGA), through the partnership with NIET.</p> <p><u>High- Quality Assessments</u></p> <p>Required Universal Screener (AIMSWEBPLUS) is currently funded through general funds.</p> <p>Benchmark Assessment (CASE) was funded through ESSER, starting school- year 24-25 TISA funds will be utilized.</p> <p><u>Tutoring/Interventions</u></p> <p>High dosage, low ratio tutoring programs will be supported through TISA funds. This funding includes part-time tutors, curriculum, and supplies.</p> <p>Part-time tutors will be funded through general funds and local partnership-Niswonger Foundation.</p> <p>RTI funds will be used to ensure all tiers have the necessary materials and resources.</p> <p><u>Summer Programs</u></p> <p>Summer Programs were currently funded through state funds, starting school year 25-26 TISA funds will be utilized.</p> |
|--|---|

Goal Statement 3: Future Ready Students-Ready Graduates 70% of Washington County School graduates will meet the Ready Graduate Indicator by year 2030

| Year | Annual Outcome Target(s) | Associated Metrics/Data |
|---|---|---------------------------------------|
| Year 1: 2023-2024 school year (Use actuals) | Ready Graduate 46.5% | Increase Ready Graduate matrix by 8%. |
| Year 2: 2024-2025 school year | Ready Graduate will increase from 47% to 55%. | |
| Year 3: 2025-2026 school year | Ready Graduate will increase from 55% to 60%. | |
| Year 4: 2026-2027 school year | | |

Goal Statement 3: Future Ready Students-Ready Graduates 70% of Washington County School graduates will meet the Ready Graduate Indicator by year 2030

| | | |
|--|---|--|
| Year 5: 2027-2028 school year | | |
| Reflection: Did your district meet its Year 1 outcomes target(s)? How will this impact your action plan for the coming years? | Washington County Schools fell slightly under the Year 1 target for College and Career Readiness. Specifically, our stated Year 1 goal for CCR was 47.0% and our actual Ready Graduate percentage was 46.5%. We do not feel we need to adjust our goals moving forward and will continue to work toward our previously stated goals in meeting our CCR goal of 70% in five years. | |

Goal Statement 3: Future Ready Students-Ready Graduates 70% of Washington County School graduates will meet the Ready Graduate Indicator by year 2030

| | |
|---|--|
| <p>Prior Year Report: What were the 2-3 major TISA investments you made in the prior year toward this goal? For each, please note the amount expended (rough estimate) and reflections on whether or not the investment contributed to progressing toward the goal or not, and how so.</p> | <p>Improving Teacher Salaries is a major investment. Hiring and retaining quality teachers impacts the outcomes of all of our goals. Including the total amount of the FY24 and FY25 raises, along with projected future salary increases will all be via TISA</p> |
| <p>Action Plan: List detailed action steps or strategies for the 2024-2025 school year to meet your annual target.</p> | <p>Action Step 1: NIET- School-Based Needs Assessment to identify strengths and areas to improve TIER I instruction to strengthen student learning and overall increases in ACT Achievement.</p> <p>Action Step 2: PreACT assessments given to grades 8, 9, and 10 to create individual plans for student success.</p> <p>Action Step 3: Increase tutoring opportunities for the ACT.</p> <p>Action Step 4: Partner with TCAT Boone's Creek to increase the number of CTE Courses and Industry Certifications available to students.</p> |

Goal Statement 3: Future Ready Students-Ready Graduates 70% of Washington County School graduates will meet the Ready Graduate Indicator by year 2030

| | |
|--|--|
| | <p><u>Action Step 5:</u> Provide transportation to TCAT Boones Creek to increase the number of CTE Courses and Industry Certifications available to students.</p> <p><u>Action Step 6:</u> Expand ASVAB testing for our students as another possible pathway to meeting the Ready Graduate indicator.</p> |
| <p>Budget Narrative: Describe how your district intends to use their budget to execute the action steps and meet the stated goal.</p> | <p>Math Implementation Grant funding will be sustained through TISA funds to support effective implementation of high-quality math curriculum, Big Ideas(AGA), through the partnership with NIET.</p> <p>District will continue to pay for all AP exams (EPSOs) for all students.</p> <p>District will continue to purchase Pre-ACT assessment for 8th, 9th, & 10th grades.</p> <p>District will continue to purchase ASVAB testing for 11th grade students.</p> |

DRAFT

Washington County Department of Education
School Educational **OVERNIGHT** Trip Authorization*

RECEIVED

OCT 18 2024

BY: KR

Date of Request 10/14/2024 School Daniel Boone H.S. Trip Date 11/15/2024 - 11/17/2024

Estimated time of departure 7AM on 11/15 and return 7PM on 11/17 total time away 3 Days(1 Instructional

Destination (include location) North American International Livestock Expo, Louisville, KY

Teacher Leann Turner Class Beef Show Team Grade 9-12

Chaperones Leann Turner

Number of Students Involved 6

Eric Sharpe

Estimated Total Miles (both ways) of Trip 436

Andrea Carr

Bus Driver/Number School Van Bus Driver/ Number n/a

Will Chaperones have a list (roll) that they are responsible for? yes

As you plan the trip, will all children be given instructions as to what they should do if they become separated (lost) from the group? yes

Will you have on file parental release forms signed by parents or legal guardians? yes

Explain the educational value of the trip: The North American International Livestock Expo is the largest livestock show in the Eastern United States. Students will not be exhibiting cattle there this year, but instead will be attending to learn more about multiple livestock breeds & breed organizations.

Total Cost Estimate \$2000

Plans for meeting the costs Cattle Owner Donations, Student Contributions, FFA Alumni Assistance

Transportation cost for educational trips shall be calculated in the following manner:

- \$16.00 per hour for driver (2 hour minimum)
- \$ 3.15 per hour to cover fixed charges (SS, retirement. etc.)
- \$19.15 total to be remitted to the central office per hour

Reimbursement for the bus and fuel shall be made at the rate of \$.75 per mile.

*Refer to Board Policy 4.302

Stephanie
Principal's Signature

10/16/24
Date

BY WC SUPERINTENDENT
[Signature]
Superintendent's Signature

10/18/24
Date

Date Approved by the Board of Education _____

Washington County Department of Education
School Educational **OVERNIGHT** Trip Authorization*

RECEIVED

OCT 22 2024

BY: KR

Date of Request 10.21.24 School David Crockett Trip Date 11/22 @ - 11/23

Estimated time of departure Friday 11/22 10:30 am and return Saturday 11/23 6:00 pm total time away 3 1/2 hours

Destination (include location) WakeMed Soccer Park Cary, NC

Teacher Mark Jennings Class Cross Country Grade 9-12

Chaperones Courtney Shaw

Number of Students Involved 20

Kevin Moore

Estimated Total Miles (both ways) of Trip 589

Erica Moore

Bus Driver/Number Jason Bellamy Bus Driver/ Number 49

Will Chaperones have a list (roll) that they are responsible for? yes

As you plan the trip, will all children be given instructions as to what they should do if they become separated (lost) from the group? yes

Will you have on file parental release forms signed by parents or legal guardians? yes

Explain the educational value of the trip: Southeast Regionals. To see better competition

Total Cost Estimate \$2400⁰⁰

Plans for meeting the costs Funds raised by Pioneer Pride 5k

Transportation cost for educational trips shall be calculated in the following manner:

\$16.00 per hour for driver (2 hour minimum)

\$ 3.15 per hour to cover fixed charges (SS, retirement, etc.)

\$19.15 total to be remitted to the central office per hour

Reimbursement for the bus and fuel shall be made at the rate of \$.75 per mile.

*Refer to Board Policy 4.302

Allen Lee Davis
Principal's Signature

10.21.24
Date

BY WC SUPERINTENDENT

Superintendent's Signature

10-22-24
Date

Date Approved by the Board of Education _____



Search mail



- Compose
- Mail
 - Principal Newsletter
- Chat
 - ThoughtExchange
- Meet
 - FMLA/Leave Requests/F...
 - GOV Deals/Surplus
 - Human Resources
 - Insurance
 - Licensure/TNCompass/T...
 - Maintenance
 - Notes
 - Nutrition
 - OCR/CRDC Reports/Doc...
 - Operations
 - CTE
 - Grants
 - New JES
 - Personal
 - Safety/Security
 - Gaggle
 - Hapara
 - Raptor
 - SPED/504
 - TDEC/RDE/Energy
 - Technology
 - TOSS-ALI

----- Forwarded message -----

From: **Rusty Whillock** <rwhillock@esg1989.com>
 Date: Thu, Oct 3, 2024 at 12:17 PM
 Subject: RE: Daniel Boone
 To: Jeremy Moore <moorej4@wcde.org>

Jeremy,

Rough budget numbers below to abandon current geothermal fields:

1. 400-ton closed circuit cooler and (3) 2,000 MBH boilers and new piping tied to existing system - \$1,275,000 + cost of a roughly 25'x25' boiler building to house the boilers and pumps and new concrete pad for cooler.
2. If ground (approx.. 3.5 acres) were available to bore approx.. 350 new geothermal wells and reconnect to existing piping entering building - \$2,750,000

Hope this helps.

Let me know if you need to discuss or need anything else.

Rusty

Jeffrey R. Whillock P.E. - President

Engineering Services Group Inc.
 900 East Hill Ave. Suite 350
 Knoxville, TN 37915
 Phone: (865) 522-0393 Ext. 109
 Fax: (865) 522-0166

From: Rusty Whillock
Sent: Monday, September 30, 2024 1:32 PM
To: Jeremy Moore <moorej4@wcde.org>
Subject: RE: Daniel Boone

Working on it.

Jeffrey R. Whillock P.E. - President

Engineering Services Group Inc.
 900 East Hill Ave. Suite 350



PCI Approval Sheet

Project Code: 24020
Project Name: Security Upgrades D Boone & D Crockett HS
PCI Type: Change Order Request
Description: Asbestos Abatement

Date: Oct 22, 2024
PCI #: COR001
OCO #:
Current Status: Submitted waiting for Approval

APPROVAL

Scope Description: Includes:
 - Abatement of the asbestos found withing the exterior CMU walls.
 - Widening of the opening to be removed to prevent future exposure
 - Steel Lintel manufacturing and installation per the lintel schedule on S1.1
 - CMU Block infill back to the original designed door rough opening size.

Senior PM: _____

Owner: _____

| Cost | Category | Description | Amount | Vendor | Vendor Name | SCO Number |
|--------|----------|--------------------|------------|--------|---------------------------------------|------------|
| 024100 | SU | Asbestos Abatement | \$5,950.00 | DHGR01 | D H Griffin Wrecking Company, Inc. | TBD |
| 042000 | SU | CMU Block Infill | \$2,000.00 | BUSH01 | Bush Masonry, LLC | TBD |
| 051200 | SU | Steel Lintel | \$1,770.00 | QUAL01 | Quality Machine and Welding Co., Inc. | TBD |
| 006113 | OT | Bond Premium | \$112.27 | | | |
| 007316 | OT | Builder's Risk | \$22.45 | | | |
| 990001 | RE | Overhead | \$972.00 | | | |
| 990001 | RE | Profit | \$535.00 | | | |

PCI Total: \$11,361.72



D. H. GRIFFIN WRECKING CO., INC.

211 Spurgeon Lane, Bristol, VA 24201

Sent via email shand@meritconstruction.com

Mr. Schuyler Hand
Merit Construction
10435 Dutchtown Road
Knoxville, TN 37932

RE: Change Order Request – Danil Boone High School
1140 Suncrest Drive, Gray, TN 37615
Subcontractor Job #: 240250-01

Dear Mr. Hand:

Based on site inspection and verbal descriptions, D. H. Griffin Wrecking Company, Inc. (DHG) proposes the following scope of services:

1. Provide necessary labor, equipment, materials, insurance and permits associated with scope to work.
2. DHG will make initial cut in block.
3. Remove the following asbestos containing materials – approximately 32 square feet of block with vermiculite block-fill insulation from within exterior wall, near main entrance.
4. Provide 3rd party ambient air monitoring during removal and PCM clearance upon completion.
5. Price includes lab testing from Fibercom Laboratory, Inc. on 9/19/2024 and from SAI from 9/20/2024 and 9/26/2024. Those results are attached.
6. Materials will be disposed of offsite in accordance with local, state and federal regulations.
7. Estimated time of completion – (1) day. Work will be performed under (1) mobilization.
8. Proposal excludes utility disconnection, capping or rerouting; layouts, hazardous materials removal including asbestos or lead abatement unless itemized above.

DHG will perform the work listed above for the amount of \$5,950.00.

If any further clarifications are needed, please contact the writer.

Sincerely,
Brandie Blankenship

TEL (276) 669-7333 FAX (276) 669-7332

“Shaping America’s Skyline Since 1959.”



FiberCom Lab #241117

*FINAL REPORT
9/19/24*

Name: Crossroads Environmental
Address: P.O. Box 977
Mt. Carmel, Tn. 37642

Project Number: N/P
P.O. Number: N/P
Project Name: Daniel Boone High School
Received Date: 9/19/2024 09:0=30 AM

Dear Mark Fish,

FiberCom would like to thank you for choosing us for the work you recently submitted.

The 1 sample(s) were received on Thursday, September 19, 2024 for PLM Analysis. The final report(s) is enclosed for the analysis of the samples received that was tested for the presence of asbestos.

The results pertain only to the samples submitted and are job specific. The sample may not be fully representative of the larger material in question. The condition of the sample analyzed was acceptable upon receipt unless otherwise noted on this report. Results represent the analysis of samples submitted by the client. Sample location, description, area, etc. was provided by the client. This report shall not be reproduced, except in full, without consent of FiberCom Laboratory, Inc.

Please refer to the listing below of the pages included in a complete final report.

Sincerely,

Robert Houseright

Robert Houseright
Laboratory Manager FiberCom Laboratory

Final Report Includes: - Cover Letter - Analysis Pages - Chain of Custody
Sample conditions: samples in Good condition



FiberCom Laboratory, Inc. Chain of Custody - Asbestos
4540 B West Stone Drive Kingsport, Tennessee 37660

Phone: (423) 230-0752 Fax: (423) 245-1858
 Email: robtcb4fibercom@embarqmail.com / fibercom@chartertn.net

www.fibercom-laboratory.com

Chain of custody must be filled out completely and signed before analysis can be performed
Approved Organization of American Industrial Hygiene Association (AIHA) and Asbestos Analysts Registry (AAR)

| | | | |
|---------------------------|---|-----------------|-------------|
| Requestor: | Mark Fish | FiberCom | |
| Your Company Name: | Crossroads Environmental Services L.L.C. | Bill to: | Same |
| Street: | P.O. Box 977 | Street: | _____ |
| Box #: | _____ | Box #: | _____ |
| City/State: | Church Hill, Tennessee | City/State: | _____ |
| Zip: | 37642 | Zip: | _____ |

| | | | |
|----------------------|--|--------------------------------|---|
| Contact Name: | Mark Fish | Email Results to : Name | markfish@embarqmail.com |
| Telephone #: | 423-429-5542 | | |
| Project Name/Number: | Daniel Boone High School 1440 Suncrest Dr Gray, TN 37615 | Purchase Order#: | _____ |

Condition of Sample: Good

PCM

| | | |
|--------------------------|--------------------------|---------------------------|
| <input type="checkbox"/> | <input type="checkbox"/> | NIOSH 7400 (f/mm2 - f/cc) |
| <input type="checkbox"/> | <input type="checkbox"/> | OSHA w/TWA |
| <input type="checkbox"/> | <input type="checkbox"/> | NIOSH 7402 TEM |

PCM TURNAROUND

| | | | |
|--------------------------|-----------------|--------------------------|------------------|
| <input type="checkbox"/> | 72 Hrs-3 Day | <input type="checkbox"/> | 48 Hrs-2 Day |
| <input type="checkbox"/> | 24 Hrs-Next Day | <input type="checkbox"/> | < 3 Hrs-Same Day |

PLM

| | | |
|--------------------------|-------------------------------------|------------------|
| <input type="checkbox"/> | <input checked="" type="checkbox"/> | EPA 600/R-93/116 |
| <input type="checkbox"/> | <input type="checkbox"/> | NVLAP Required |

PLM TURNAROUND

| | | | |
|-------------------------------------|--------------|--------------------------|-----------------|
| <input checked="" type="checkbox"/> | < 3 Hrs | <input type="checkbox"/> | 24 Hrs-Next Day |
| <input type="checkbox"/> | 48 Hrs-2 Day | <input type="checkbox"/> | Positive Stop |

FIBL # 341117

** Samples Submitted after 12pm, turnaround will start the following business day*

Special Instructions/Comments: _____

Total Samples: 1

Client Sample # (s) _____

Relinquished: Mark D. Fish **Date:** 9/19/2024 **Time:** .8:00

Received: [Signature] **Date:** 9/19/24 **Time:** 0930



Results of Testing by the Research Method for the Analysis of Vermiculite Attic Insulation EPA/600/R-04/004 Asbestos Analysis

Client: Crossroads Environmental Services
LLC
P.O. Box 977 Church Hill, TN 37642

Attn: Mark Fish

Lab Order ID: 10063100

Date Received: 09/20/2024

Date Reported: 09/23/2024

Page: 1 of 1

Project: 24-156 DHG @ Daniel Boone H.S.
1440 Suncrest Dr. Gray TN 37615

| Sample ID | Description | Assessment for Asbestos Presence |
|----------------|---|-------------------------------------|
| Lab Sample ID | Lab Notes | |
| 1 | <i>PLM Analysis of "Floats & Sinks"</i> | Libby Amphibole 0.50% |
| 10063100VAI_01 | <i>See Procedure Step A below.</i> | |
| | <i>TEM Analysis of Suspension</i> | N/A |
| | <i>See Procedure Step B below.</i> | |

Summary of Procedure

Step A- "Sinks and Floats": The Vermiculite Attic Insulation (VAI) was initially examined in dry bulk by stereomicroscope and Polarized Light Microscopy (PLM). A known weight of the material was then suspended in water, stirred, agitated, and then left to settle. The floating vermiculite was removed, and the suspension decanted for later analysis by Transmission Electron Microscopy (TEM), if necessary (absence of asbestos found in the light microscopy analyses of sinks and floats) while the sunken "sinks" material was dried and examined by stereomicroscope and PLM. Any Readily recognized fiber bundles were separated and weighed. It is estimated that this screening detection limit is <0.01% by weight.

Step B- Suspension: the suspension decanted in the previous step was analyzed by TEM if no asbestos was found in the light microscopy analyses of sinks and floats. After a 2-minute treatment in an ultrasonic bath, aliquots of the suspension were filtered through a 0.2 µm filter, which were then dried, collapsed, carbon-coated, and dissolved to create a replicate film with contained particulate on a copper mesh grid for TEM analysis. TEM analysis was conducted on a JEOL 2000, equipped with Energy-Dispersive X-Ray Analyzer (EDXA) and Selected Area Electron Diffraction (SAED). Volumes filtered and areas analyzed are adjusted to obtain an analytical sensitivity of 1.0×10^6 fibers/gram, unless a lower detection limit is requested.

Russell Shelton

Analyst

Lab Director



Results of Testing by the Research Method for the Analysis of Vermiculite Attic Insulation EPA/600/R-04/004 Asbestos Analysis

Client: Crossroads Environmental Services LLC
P.O. Box 977
Church Hill, TN 37642
Project: Daniel Boone H.S. 1440 Suncrest Dr.
Gray TN 37615

Attn: Mark Fish

Lab Order ID: 10063622
Date Received: 09/26/2024
Date Reported: 09/27/2024
Page: 1 of 1

| Sample ID | Description | Assessment for Asbestos Presence |
|----------------|---|-------------------------------------|
| Lab Sample ID | Lab Notes | |
| 2 | <i>PLM Analysis of "Floats & Sinks"</i> | Libby Amphibole 0.89% |
| 10063622VAI_01 | <i>See Procedure Step A below.</i> | |
| | <i>TEM Analysis of Suspension</i> | Not Analyzed |
| | <i>See Procedure Step B below.</i> | |

Summary of Procedure

Step A- "Sinks and Floats": The Vermiculite Attic Insulation (VAI) was initially examined in dry bulk by stereomicroscope and Polarized Light Microscopy (PLM). A known weight of the material was then suspended in water, stirred, agitated, and then left to settle. The floating vermiculite was removed, and the suspension decanted for later analysis by Transmission Electron Microscopy (TEM), if necessary (absence of asbestos found in the light microscopy analyses of sinks and floats) while the sunken "sinks" material was dried and examined by stereomicroscope and PLM. Any Readily recognized fiber bundles were separated and weighed. It is estimated that this screening detection limit is <0.01% by weight.

Step B- Suspension: the suspension decanted in the previous step was analyzed by TEM if no asbestos was found in the light microscopy analyses of sinks and floats. After a 2-minute treatment in an ultrasonic bath, aliquots of the suspension were filtered through a 0.2 µm filter, which were then dried, collapsed, carbon-coated, and dissolved to create a replicate film with contained particulate on a copper mesh grid for TEM analysis. TEM analysis was conducted on a JEOL 2000, equipped with Energy-Dispersive X-Ray Analyzer (EDXA) and Selected Area Electron Diffraction (SAED). Volumes filtered and areas analyzed are adjusted to obtain an analytical sensitivity of 1.0×10^6 fibers/gram, unless a lower detection limit is requested.

Russell Shelton

Analyst

Lab Director

QUALITY MACHINE AND WELDING CO., INC.



P.O. Box 27345
 Knoxville, Tennessee 37927
 Phone (865) 524-2162

2008 Hoitt Ave.
 Knoxville, TN 37917
 Fax (865) 524-1830

Change Order Request

| | |
|---|------------------------------------|
| Date: 10/16/24 | Q.M. & W. Job #: 24-044 |
| Contractor: Merit Construction, Inc. | C.O.R #: 1 |
| Project: DBHS / DCHS Security Upgrades | Contractors RFP #: 1 |

Quality Machine & Welding proposes to perform extra work for the above referenced project as follows:

| |
|---|
| Change Order Description: Rework T101 Beams Due to Field Dimension Error Added W8x10 Lintel Beam |
|---|

| | Materials and Use Tax | Shop Labor | Erection | Total |
|-------------------------|--------------------------|------------|----------|------------------------|
| Rework T101 Beams | Not Included in this COR | \$1,550.00 | N/A | \$1,550.00 |
| Added W8x10 Lintel Beam | \$430.00 | \$515.00 | \$825.00 | \$1,770.00 |
| | | | | |
| | | | | |
| Total for COR# 1 | | | | See Price Listed Above |

Remarks: Please review and let us know if we need to proceed with these changes.

* Work associated with this "Change Order Request" will not be performed prior to the receipt of hand and/or type written authorization.

Authorized/Accepted

Quality Machine & Welding

Firm: _____

By: Matt James

By: _____

Title: Project Estimator

ENVIRONMENTALLY RESPONSIBLE • ASBESTOS FREE • MERCURY FREE

SPORT SURFACES



#4SB STADIUM BLUE



#1 GRASS GREEN



#2 RED



#12 SAND DUNE



#9 NOVA GREEN



#10 BURGUNDY



#4 BLUE



#11 CLASSIC GREEN



#3 TERRA COTTA



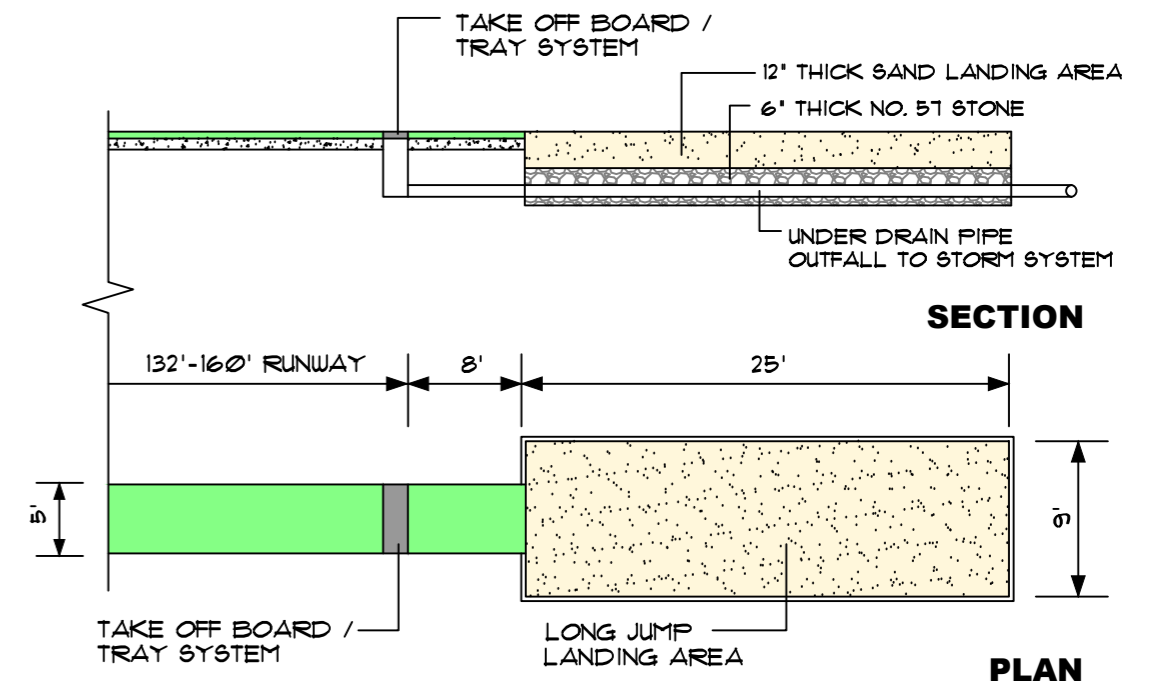
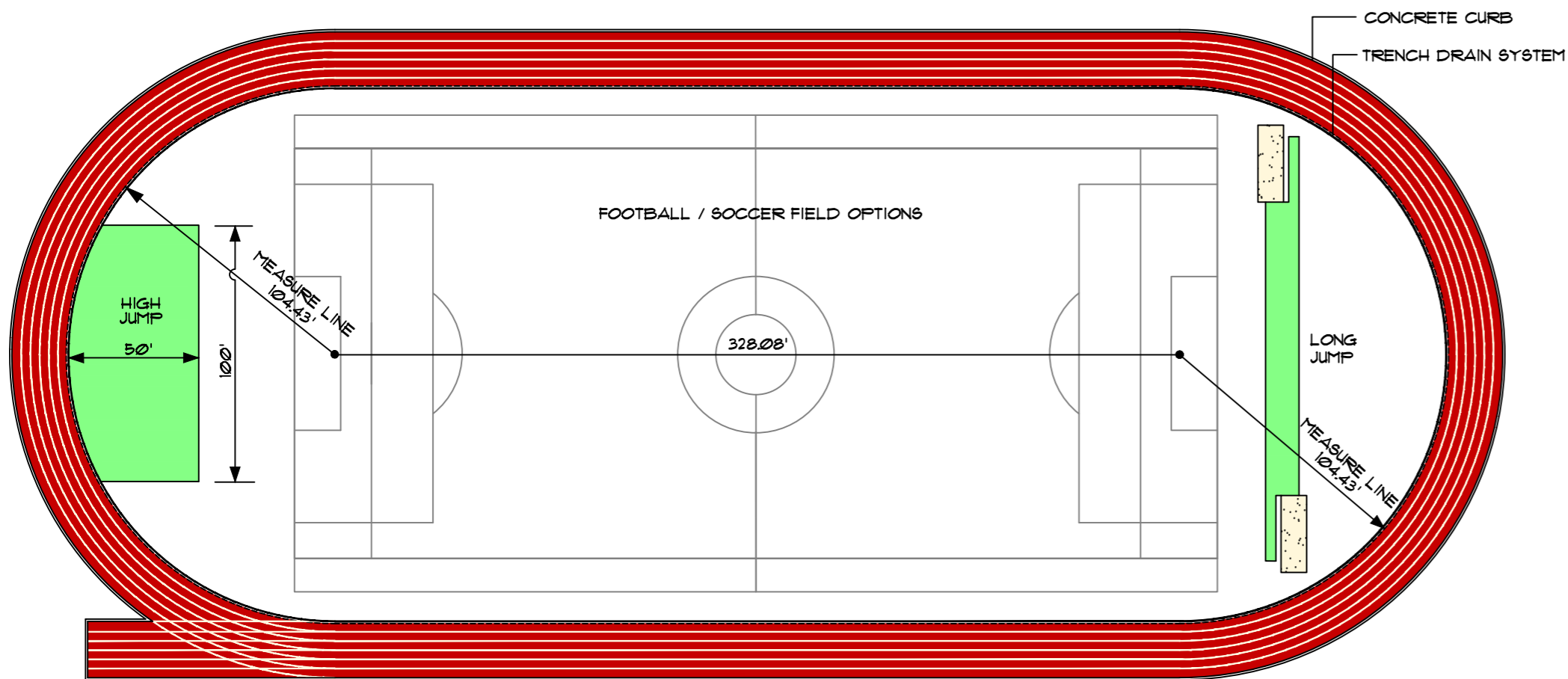
**#7 BROWN
field mix**

The chips on this color card are actual samples of our Combination Surface®



- Princeton College • Clemson University • Wellesley College
- Frostburg State University • University of Puerto Rico
- Elon College • University Club of Memphis • Brandeis University • Rhodes College • Grambling State University
- Muskingum College • Ankara University • Bucknell University • University of South Carolina • Lamar University
- University of Saskatchewan • Colegio San Roque • Oxford College • Louisiana Tech University • Ole Miss • Dartmouth
- Memphis University School • University of Kansas
- Sonoma State University • Montgomery College • Sweet Briar College • Boston University • Amherst College
- Colegio Hiram Bingham • Carson Newman College
- Arkansas State University • Davidson College • Virginia Polytechnic Institute • University of Connecticut • University of North Carolina • Bloomsburg University • St. Joseph's College • Colegio de la Inmaculada • Louisiana State University • University of California at Berkeley • Trenton State • Wesleyan University • Temasek Junior College, Singapore • University of Texas • Nazareth College
- University of Nebraska • Northwest Missouri State University • Hartnell College • Rhode Island College • Queens College • Eastern Nazarene College • Rutgers University
- SUNY Brockport • East Tennessee State University
- Tusculum College • Maryville College • Ohio Wesleyan University • Izmir Turkish American College
- Dillard University • Kamehameha Schools, Honolulu
- Webb School, Knoxville • Jackson Athletic Club
- Cherokee Country Club • Camelback Resort • Atlantic Club
- Governor Dummer Academy • Exeter Academy • Mount Auburn Club • Hawks Cay Resort • Gold River Racquet Club
- Guilford Racquet Club • Bass River Tennis Club • Ankara Sport International • Port Clinton Ohio Tennis • Hanoi Police Headquarters • Country Club of Colorado • The Sport Center Ho Tay, Vietnam • Academia De Tennis, San Jose • Costa Rica • Midtown Athletic Club • China Import-Export Bank, Beijing • Istanbul Hilton • Guayaquil Tennis Club • Nang Huong Hotel, Hanoi • Lake Country Racquet & Athletic Club
- Jericho Tennis Club, Vancouver • McCall Field Country Club
- Ministry of Agriculture Ha Tay, Vietnam

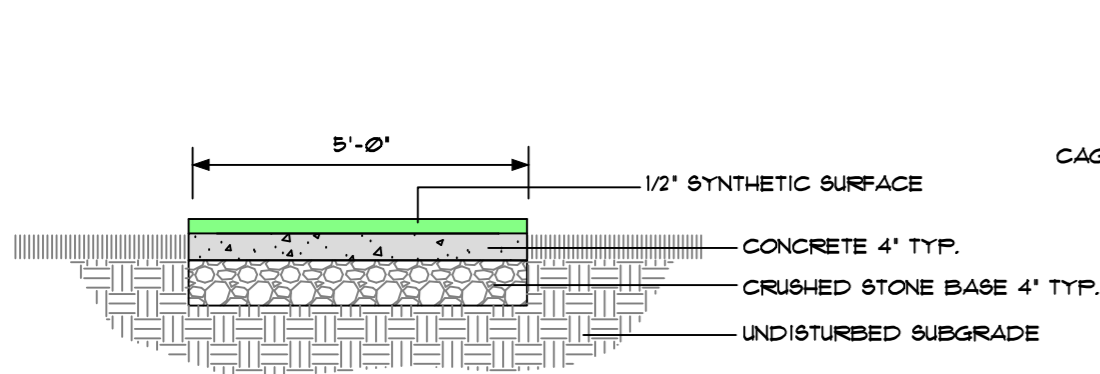




LONG JUMP/TRIPLE JUMP PIT
NOT TO SCALE

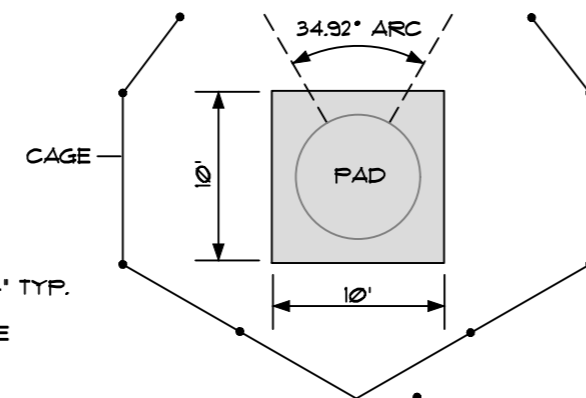
400 METER 6 LANE TRACK LAYOUT

NOT TO SCALE



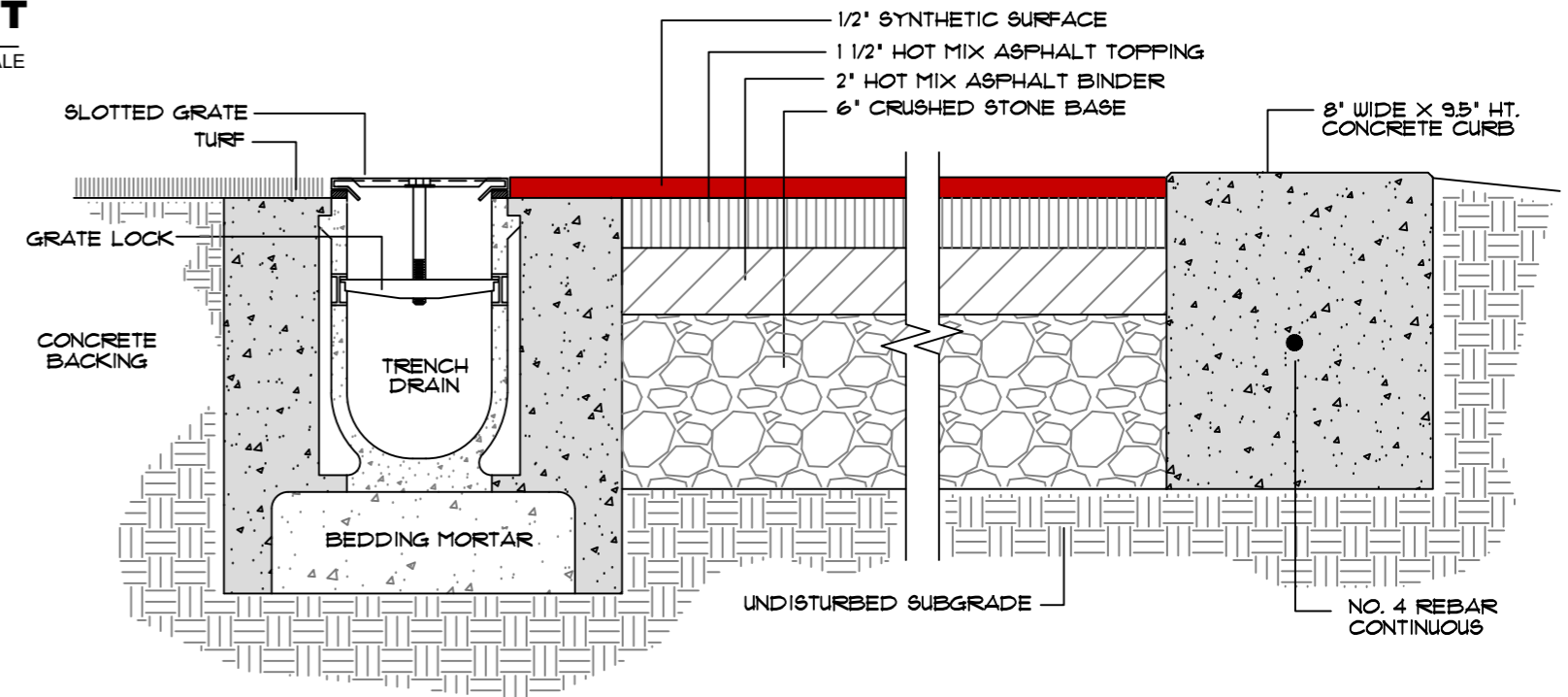
CONCRETE RUNWAY

NOT TO SCALE



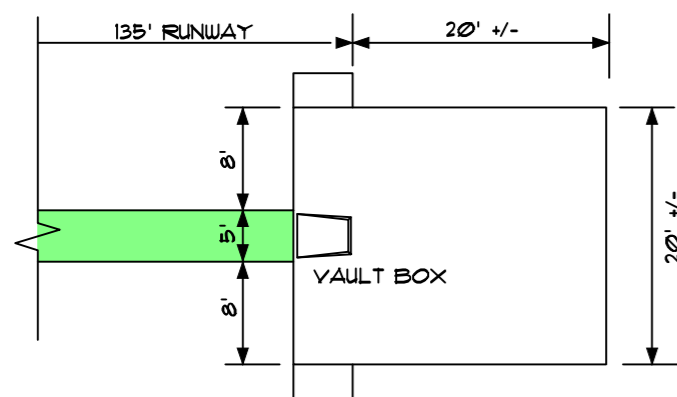
DISCUS PAD WITH CAGE

NOT TO SCALE



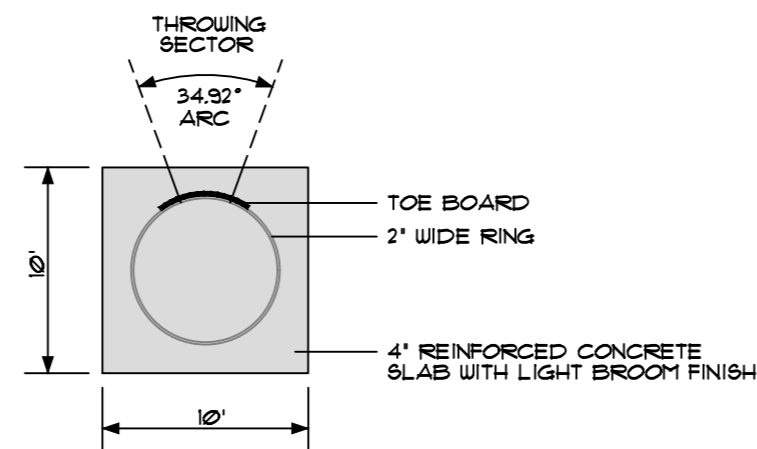
TRACK SYSTEM PROFILE

NOT TO SCALE



POLE VAULT LANDING AREA

NOT TO SCALE



SHOT PUT PAD

NOT TO SCALE

RUNNING TRACK DETAILS

BASELINE
SPORTS CONSTRUCTION
3600 HENSON ROAD
KNOXVILLE, TENNESSEE 37921
(865) 588-4320 FAX (865) 588-4111



McCall Fencing Proposals

| School | Work Needed | Price |
|---------------------------|--|-------------|
| South Central | Tall Green Vinyl Chain Link Perimeter Fence | \$32,411.00 |
| | Gate Tall Cantilever Slide Gate | \$9,817.00 |
| | Gate Double Swing Gate | \$6,760.00 |
| | Playground Fence Tall Green Vinyl Chain Link include swing gate | \$11,938.00 |
| Ridgeview | Install Tall Green Vinyl Chain Link Fence | \$5,962.00 |
| | Repair 260ft Line of Fence | \$1,085.00 |
| | Install 76LF of 48" Tall Vinyl Chain Link Fence | \$5,962.00 |
| | Repair 260ft Line of Fence-Re-tying & Replace 1 Line post & fix gate | \$1,085.00 |
| Fall Branch School | Install Tall Black Vinyl Link Fence, matching existing fence | \$5,693.00 |
| Gray Elementary | Install Galvanized Chain Link With Gates | \$9,000.00 |



Sales Order

Order No.: SO-222628
Order Date: 9/23/2024
Delivery Date: 9/23/2024
Customer ID: WA7382
Currency: USD
For: LOGAN CLARK

Pioneer Athletics
 4529 Industrial Parkway
 Cleveland, OH, 44135
 Phone: 800-877-1500
 Web: www.pioneerathletics.com

SHIP TO:
 WASHINGTON COUNTY SCHOOL
 306 HALF FORREST DR
 JONESBOROUGH TN 37659-1550
 Attn: LOGAN CLARK

BILL TO:
 WASHINGTON COUNTY SCHOOL
 405 W COLLEGE ST
 JONESBOROUGH TN 37659-1009
 United States of America

CUSTOMER P.O. NO.

QUOTE-KM

TERMS

NET 15

CONTACT

Kyle Masterson, kmasterson@pioneerathletics.com

| NO. | ITEM | QTY. | UOM | PRICE | EXTENDED PRICE |
|-----|---|--------|-----|------------|----------------|
| 1 | NEEDRESALE: NOTE: 5 ROW 21' NON-ELEVATED STANDARD BLEACHER | 2.0000 | EA | 7,840.0000 | 15,680.00 |

| | | | |
|---------------------------|---|-----------------------------|-----------|
| Total Weight (LB): | 0 | Sales Total: | 0.00 |
| | | Freight & Misc.: | 15,680.00 |
| | | Tax Total: | 0.00 |
| | | Total (USD): | 15,680.00 |



PO Box 841393
 Dallas, TX 75284-1393
 Phone: 800-527-7510 Fax: 800-899-0149
 Visit us at www.bsnsports.com

| Quote | |
|-------------------|-----------------------|
| Cart #: | 12268201 |
| Purchase Order #: | Bleachers |
| Cart Name: | Clark - Bleachers (1) |
| Quote Date: | 09/23/2024 |
| Quote Valid-to: | 10/31/2024 |
| Payment Terms: | NT30 |
| Ship Via: | |
| Ordered By: | Logan Clark |

Contact Your Rep

CJ Lee Email: cjlee@bsnsports.com | Phone: 423-383-1931

Sold to
1092370
 WASHINGTON CNTY B.O.E.
 405 W COLLEGE ST
 JONESBOROUGH TN 37659-1009
 USA

Ship To
1092370
 WASHINGTON CNTY B.O.E.
 Logan Clark
 405 W COLLEGE ST
 JONESBOROUGH TN 37659-1009
 USA

Payer
1092370
 WASHINGTON CNTY B.O.E.
 405 W COLLEGE ST
 JONESBOROUGH TN 37659-1009
 USA

| Item Description | Qty | Unit Price | Total |
|---|------|-------------|--------------|
| 5 Row 21' Alum Bleacher Item # - NB0521 | 2 EA | \$ 6,499.95 | \$ 12,999.90 |

| | |
|-------------------------|--------------------|
| Subtotal: | \$12,999.90 |
| Other: | \$0.00 |
| Freight: | \$2,339.98 |
| Sales Tax: | \$0.00 |
| Order Total: | \$15,339.88 |
| Payment/Credit Applied: | \$0.00 |
| Order Total: | \$15,339.88 |

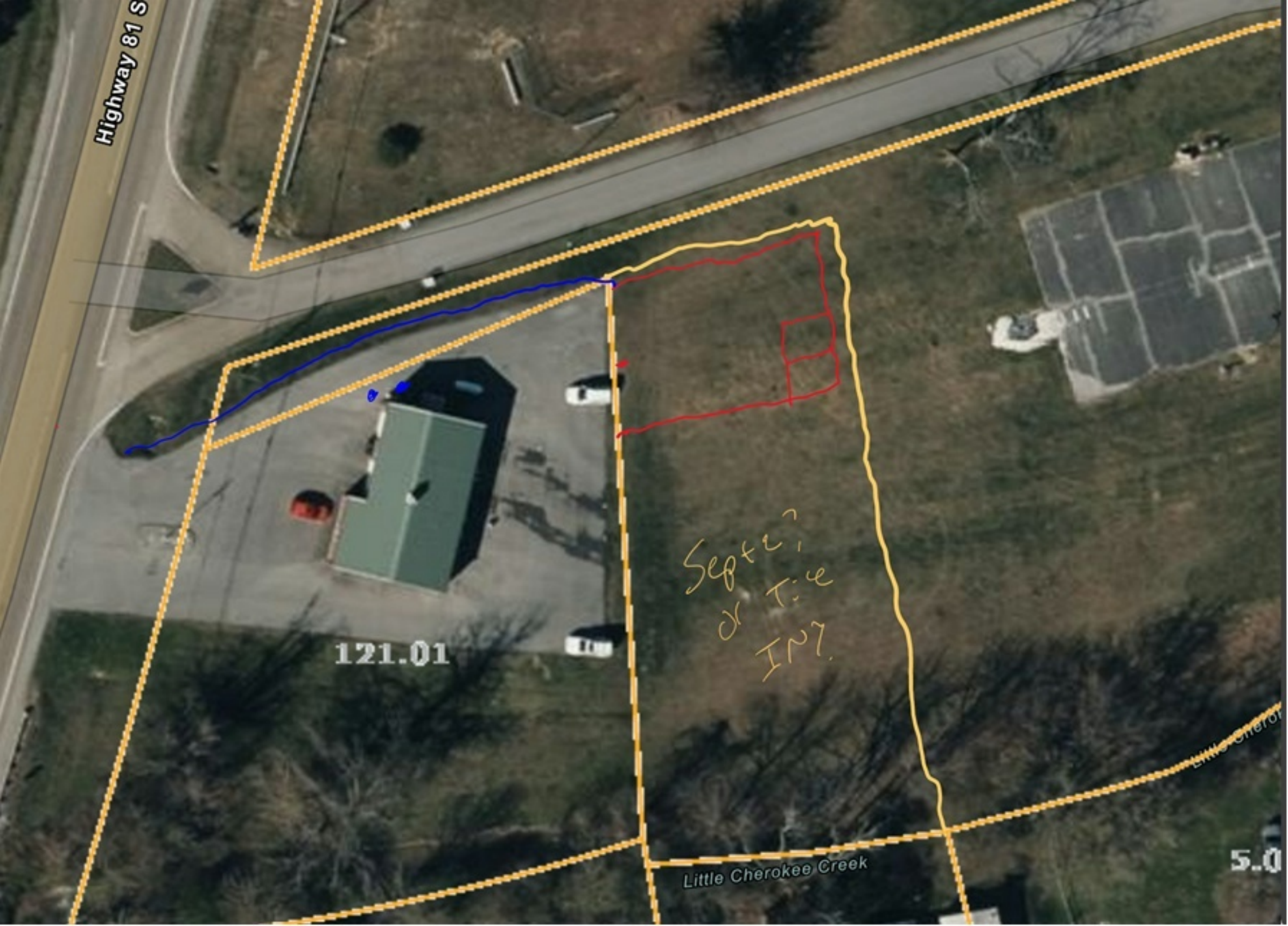
Highway 81 S

121.01

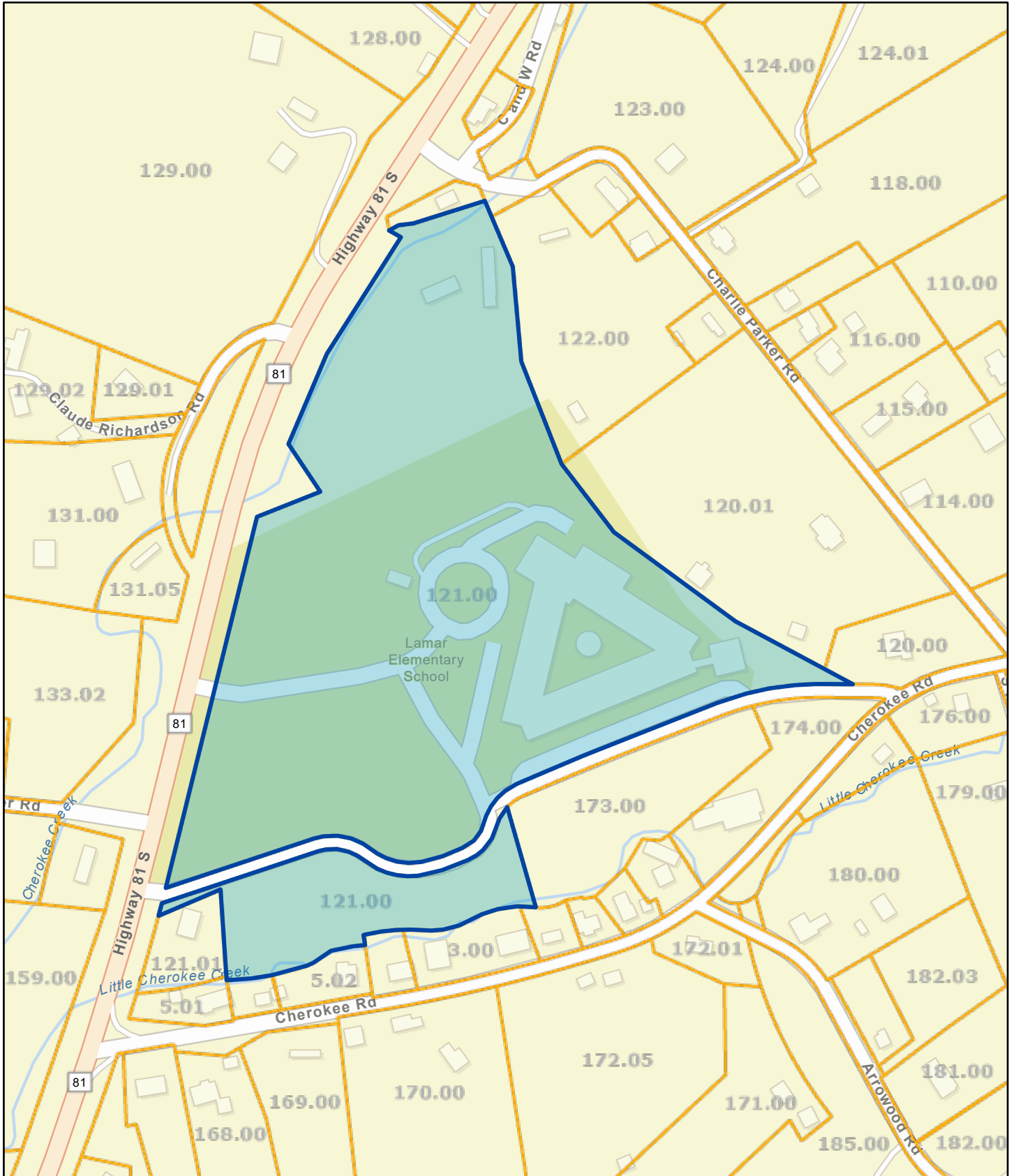
Septic
dr T:4
IN7.

Little Cherokee Creek

5.0

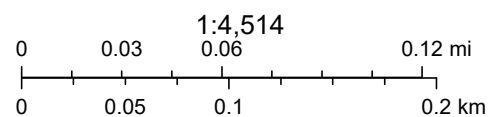


Washington County - Parcel: 083 121.00



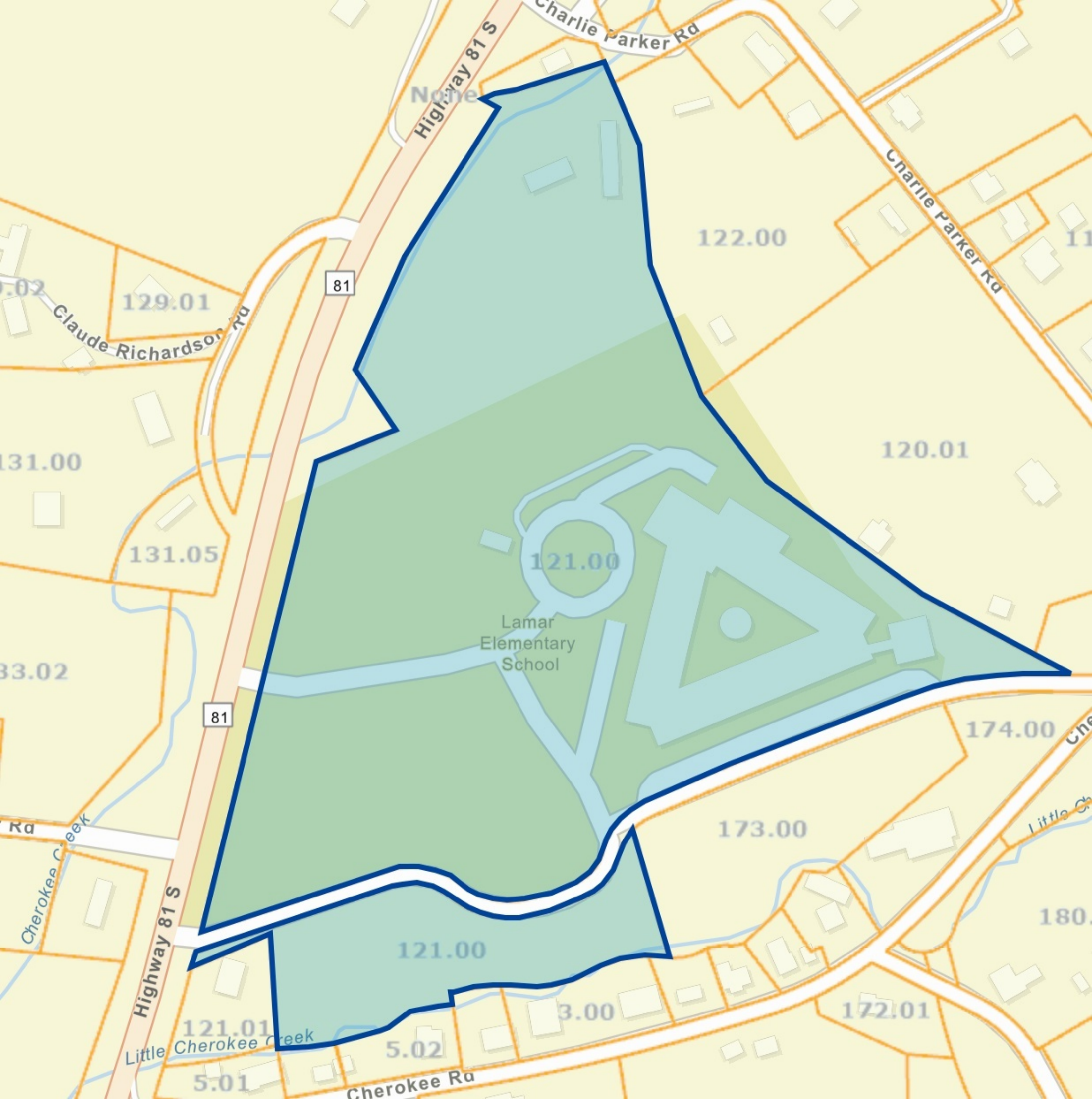
Date: October 15, 2024

County: Washington
Owner: LAMAR SCHOOL
Address: HWY 81 S
Parcel Number: 083 121.00
Deeded Acreage: 0
Calculated Acreage: 25.6
Date of TDOT Imagery: 2023
Date of Vexcel Imagery: 2023



State of Tennessee, Comptroller of the Treasury, Division of Property Assessments (DPA), Esri Community Maps Contributors, State of North Carolina DOT, Tennessee STS GIS, © OpenStreetMap, Microsoft, Esri, TomTom, Garmin, SafeGraph, GeoTechnologies, Inc, METI/NASA, USGS, EPA, NPS, US Census Bureau, USDA, USFWS

The property lines are compiled from information maintained by your local county Assessor's office but are not conclusive evidence of property ownership in any court of law.



Washington County Board of Education

| | | | |
|--|---|-----------------------------------|---------------------------------|
| Monitoring: Review: Annually | Descriptor Term: Emergency Closings | Descriptor Code: 1.8011 | Issued Date: 08/05/21 |
| | | Rescinds: 1.8011 | Issued: 04/09/20 |

1 *General*

2 The Board authorizes the Director of Schools to close schools in the event of hazardous weather, a public
3 health emergency, or any other emergency, which presents a threat to the safety of students, staff
4 members, or school property.¹ As soon as the decision to close schools is made, the Director of Schools
5 will notify the public media and request that an announcement be made.

6 If school is not in session or is dismissed early due to snow or inclement weather, the Director of Schools
7 in consultation with the principal(s) of the impacted school(s) shall determine if all scheduled activities
8 in which students are involved shall be postponed or cancelled.

9 **EMPLOYEE RESPONSIBILITIES**

10 In the event of an emergency that requires closure of a school building, group of schools, or the entire
11 district, the Director of Schools is authorized to continue to pay employees who are not able to physically
12 report for duty as a result. These employees shall receive their regular wages. Such payments shall not
13 exceed the number of days budgeted for each employee.

Legal References

1. TCA 49-6-3004(e)(1); TRR/MS 0520-01-02-.31(1)(a)(1)(i); TCA 58-2-101; Public Acts of 2021, Chapter No. 96

Cross References

Emergency Preparedness Plan 3.202
Telework During Emergencies 5.1151